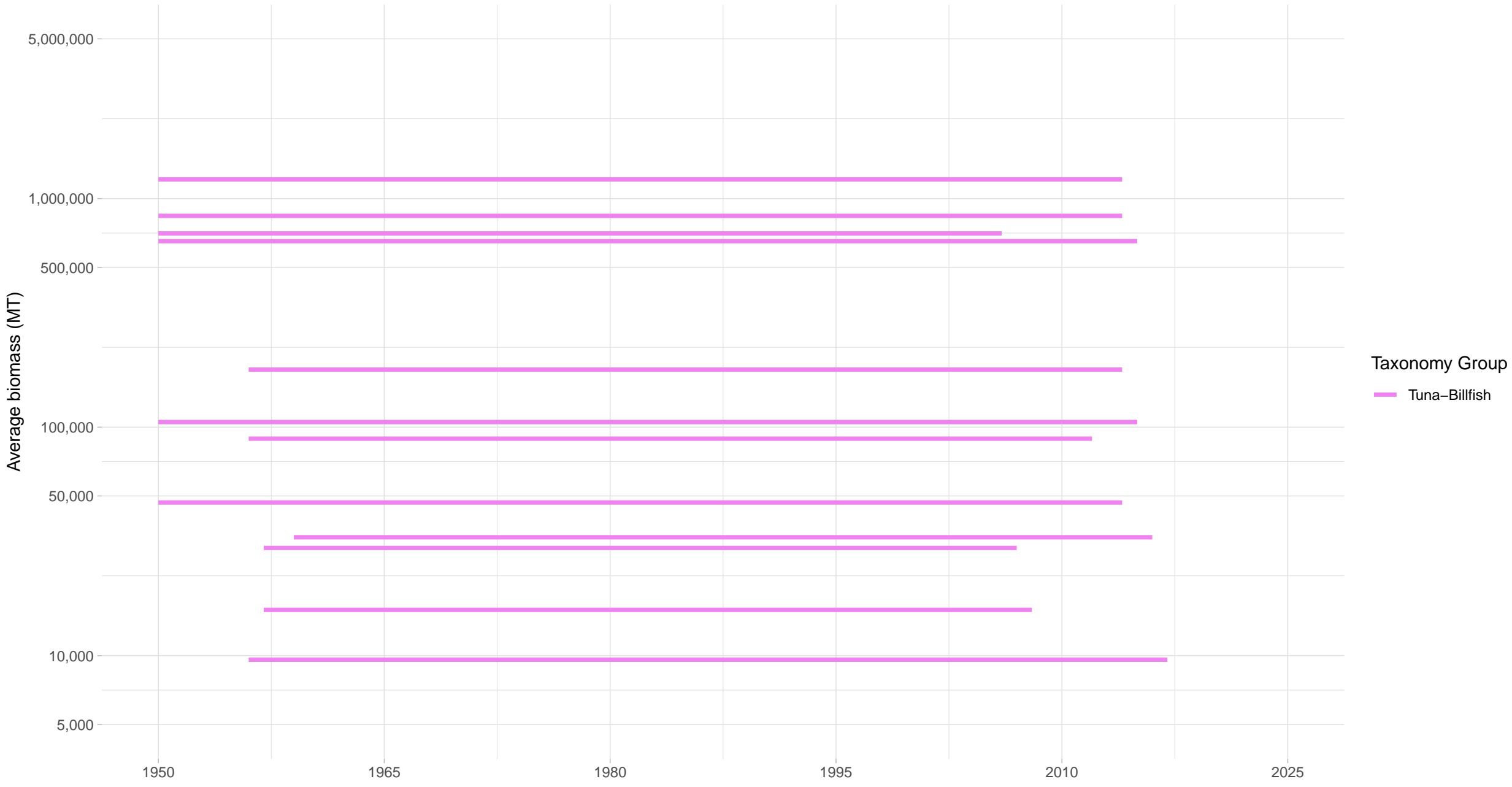


Biomass Coverage in Atlantic Ocean Region



Biomass Coverage Over Time in Atlantic Ocean Region

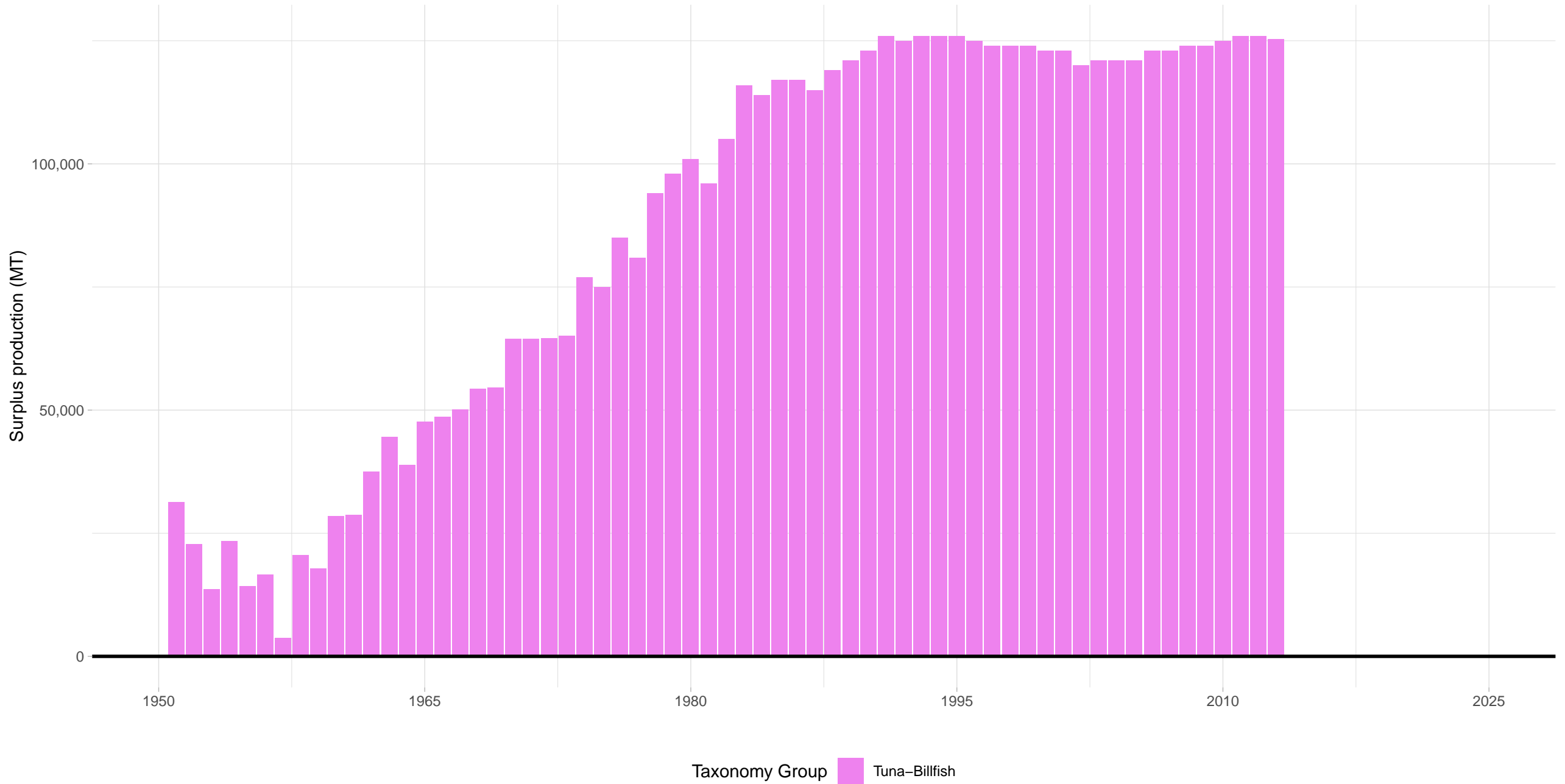
Stocks ordered from lowest to highest average biomass



Taxonomy Group Tuna-Billfish

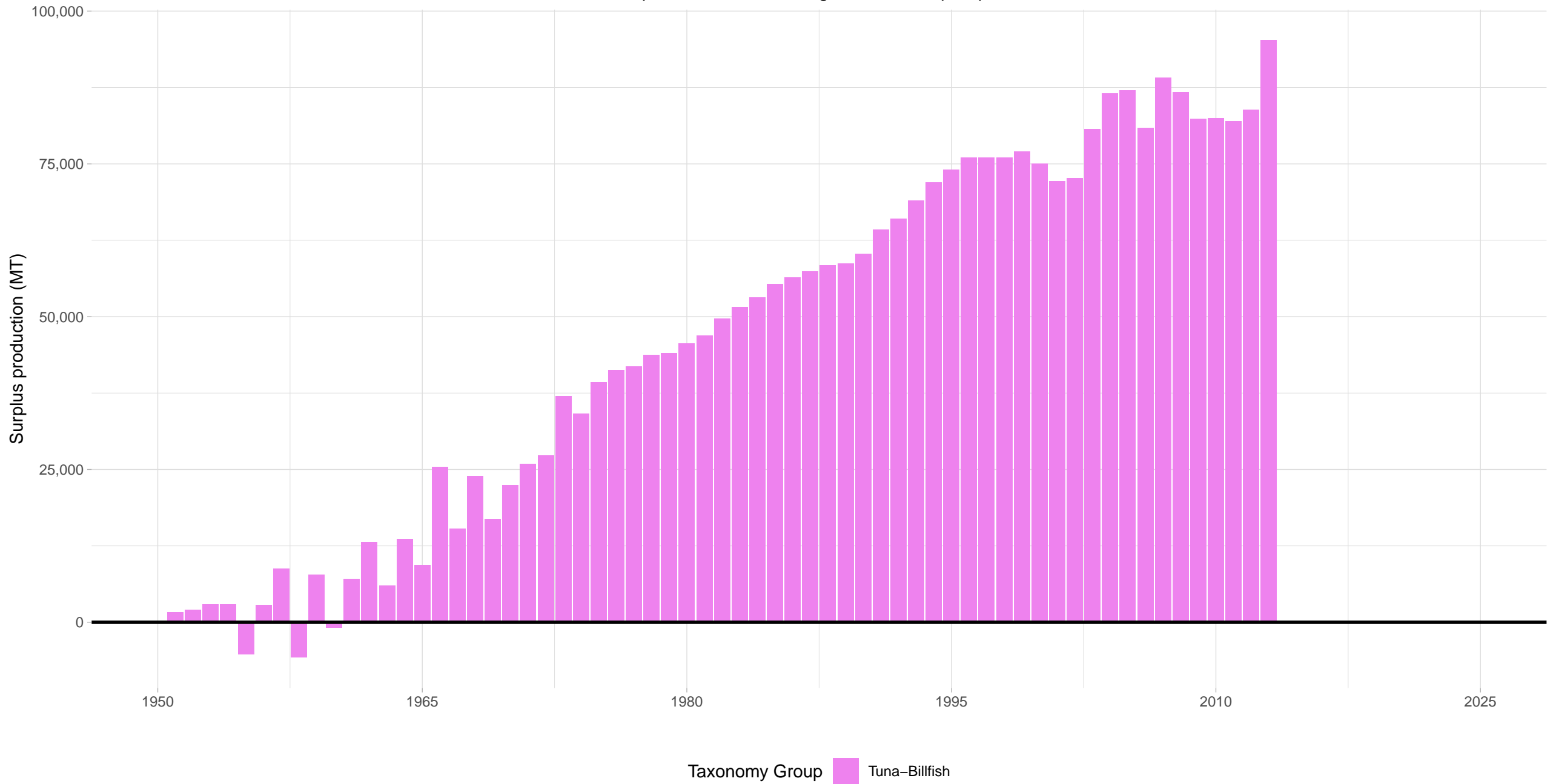
Yellowfin tuna Atlantic Ocean – Atlantic Ocean Region

Stock represents 29% of average absolute surplus production



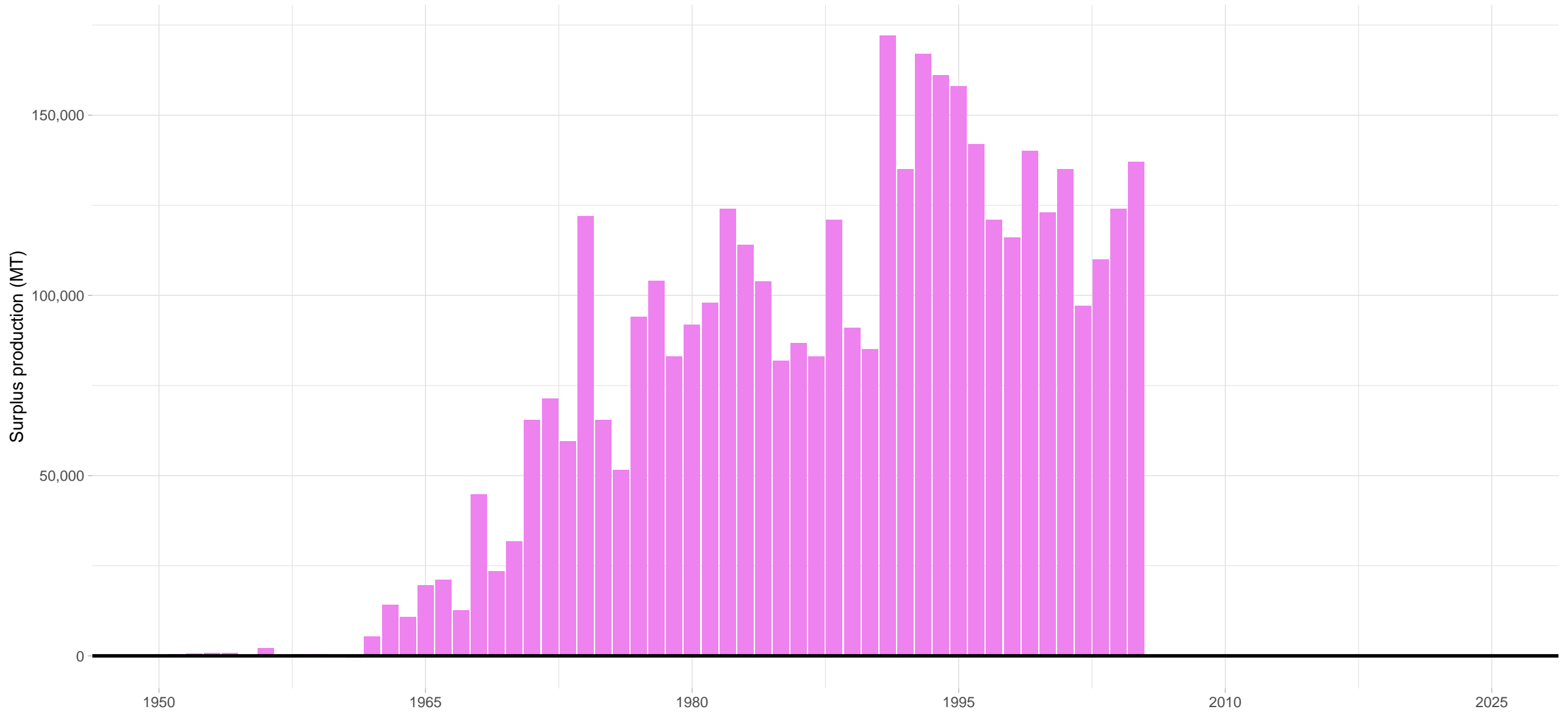
Bigeye tuna Atlantic Ocean – Atlantic Ocean Region

Stock represents 16% of average absolute surplus production



Skipjack tuna Eastern Atlantic – Atlantic Ocean Region

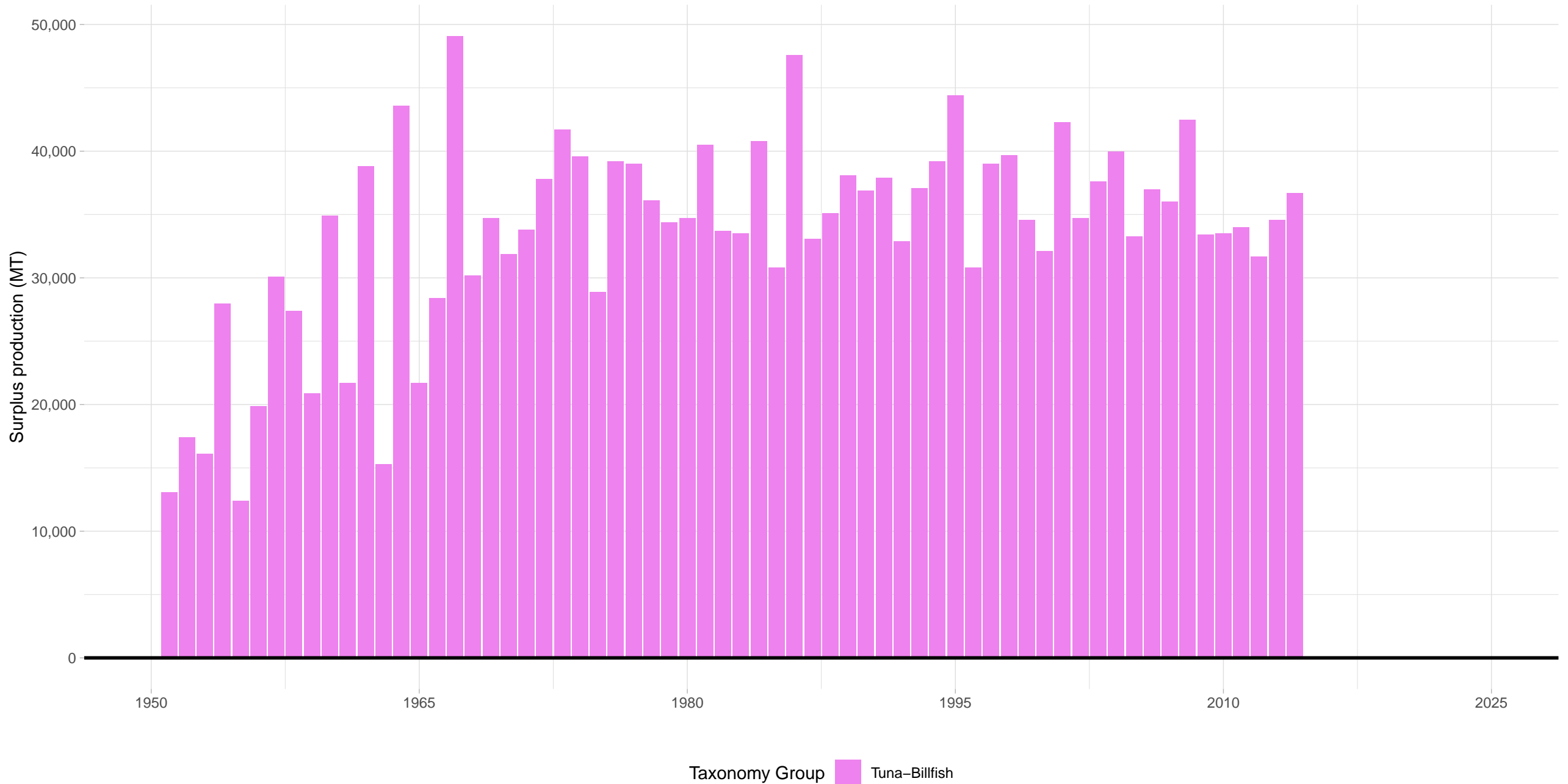
Stock represents 24% of average absolute surplus production



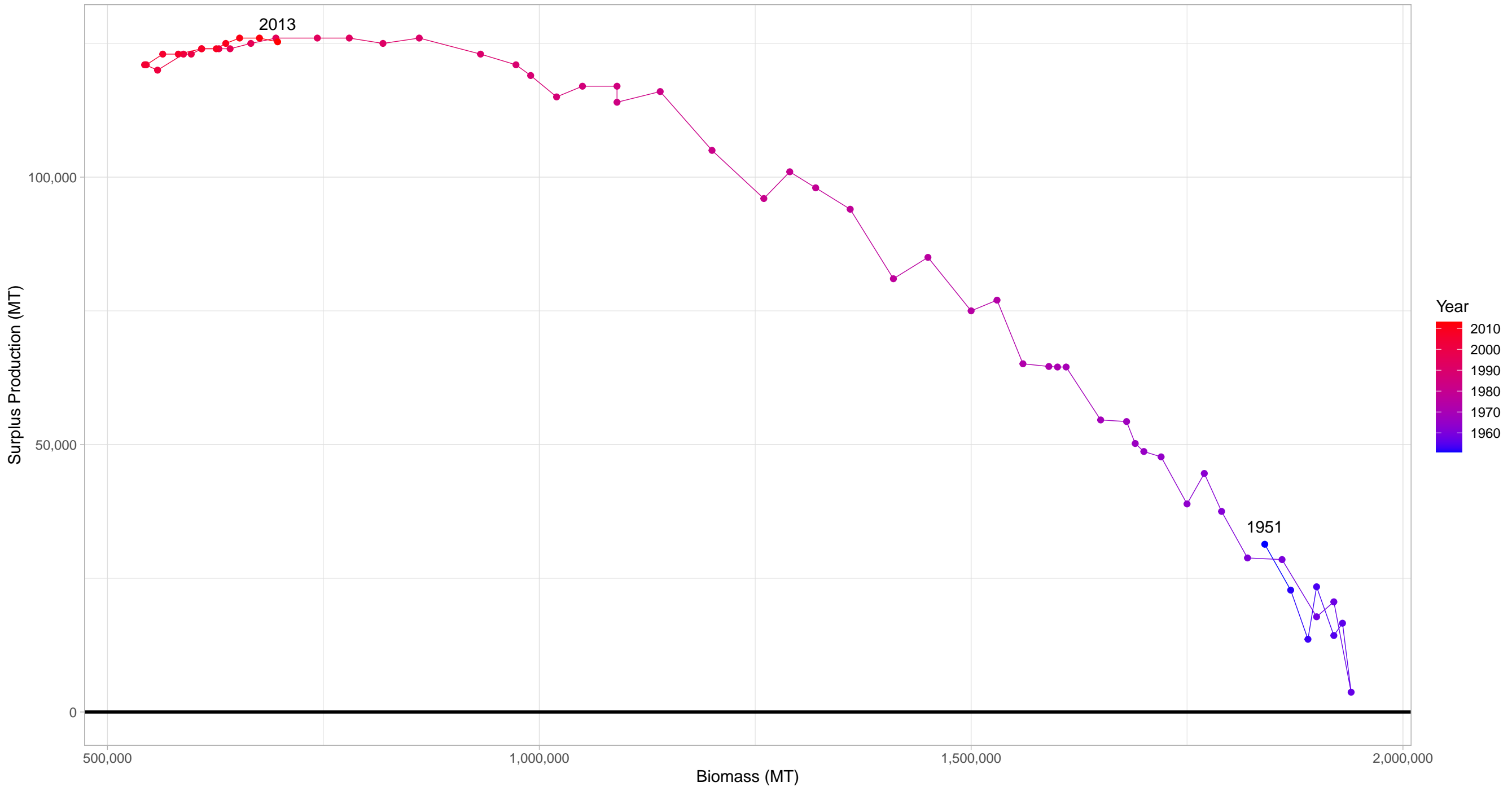
Taxonomy Group Tuna-Billfish

Albacore tuna Northern Atlantic – Atlantic Ocean Region

Stock represents 11% of average absolute surplus production

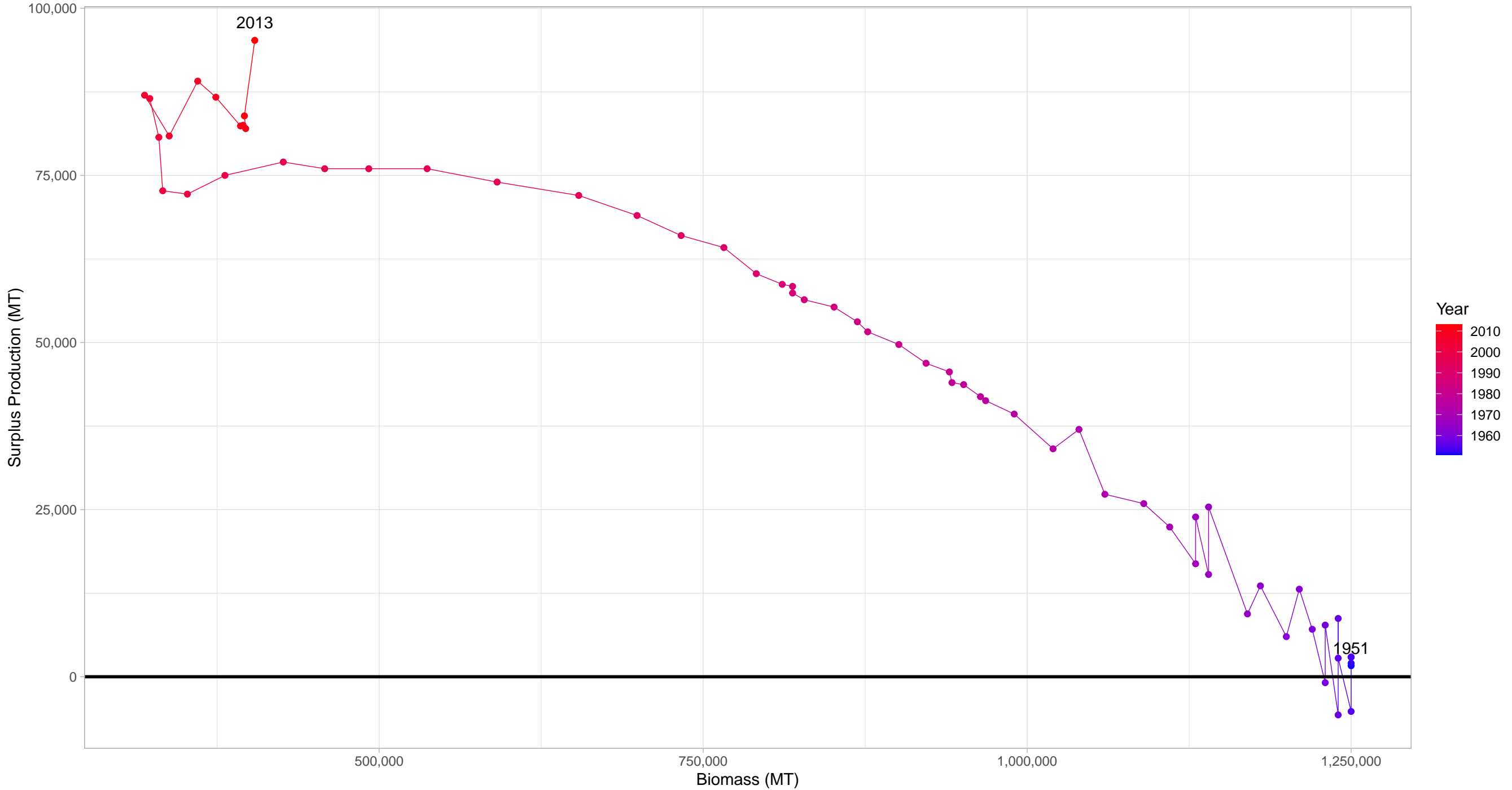


Yellowfin tuna Atlantic Ocean in Atlantic Ocean Region



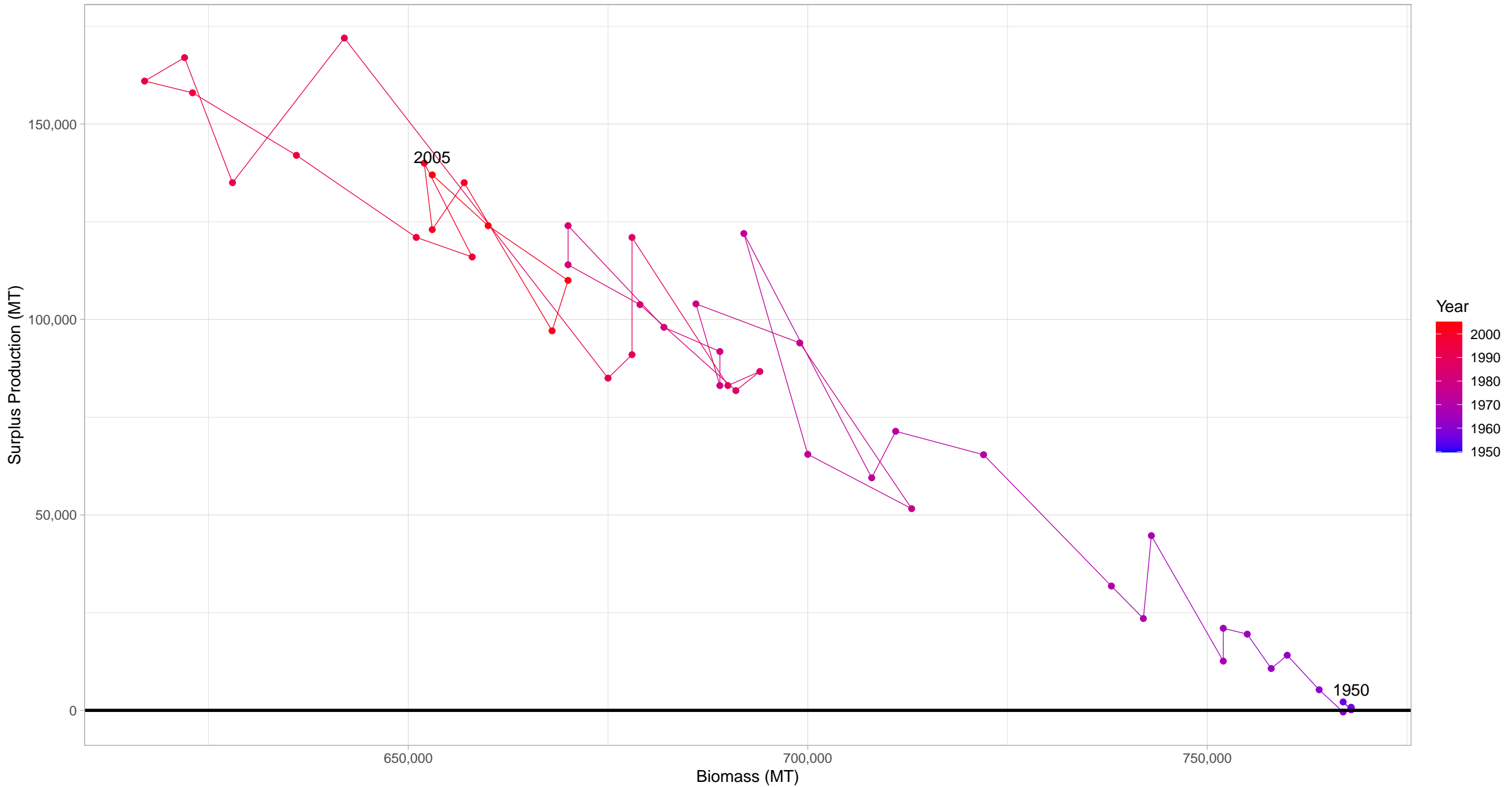
First and last years with recorded surplus production are labeled

Bigeye tuna Atlantic Ocean in Atlantic Ocean Region



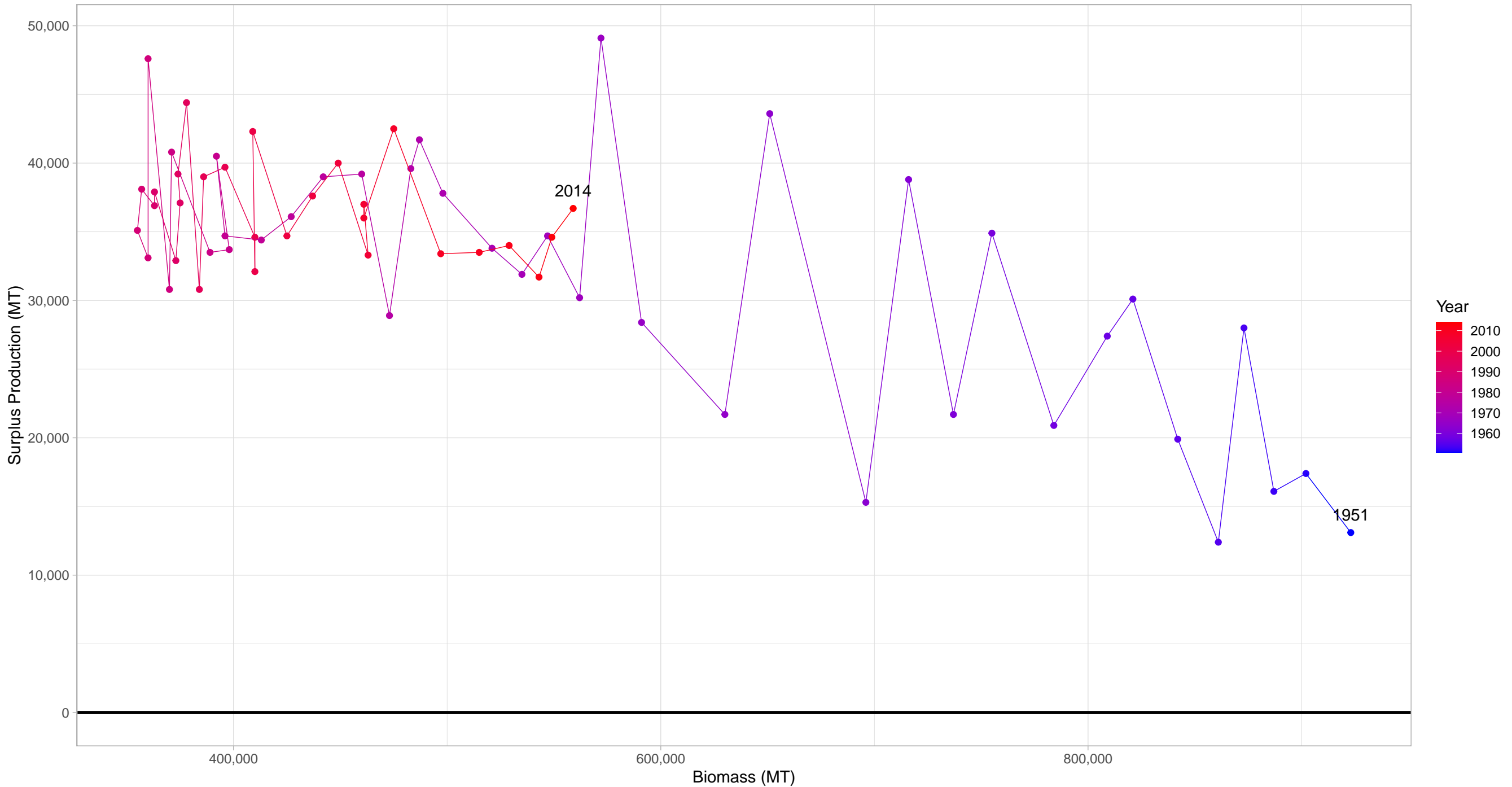
First and last years with recorded surplus production are labeled

Skipjack tuna Eastern Atlantic in Atlantic Ocean Region



First and last years with recorded surplus production are labeled

Albacore tuna Northern Atlantic in Atlantic Ocean Region



First and last years with recorded surplus production are labeled