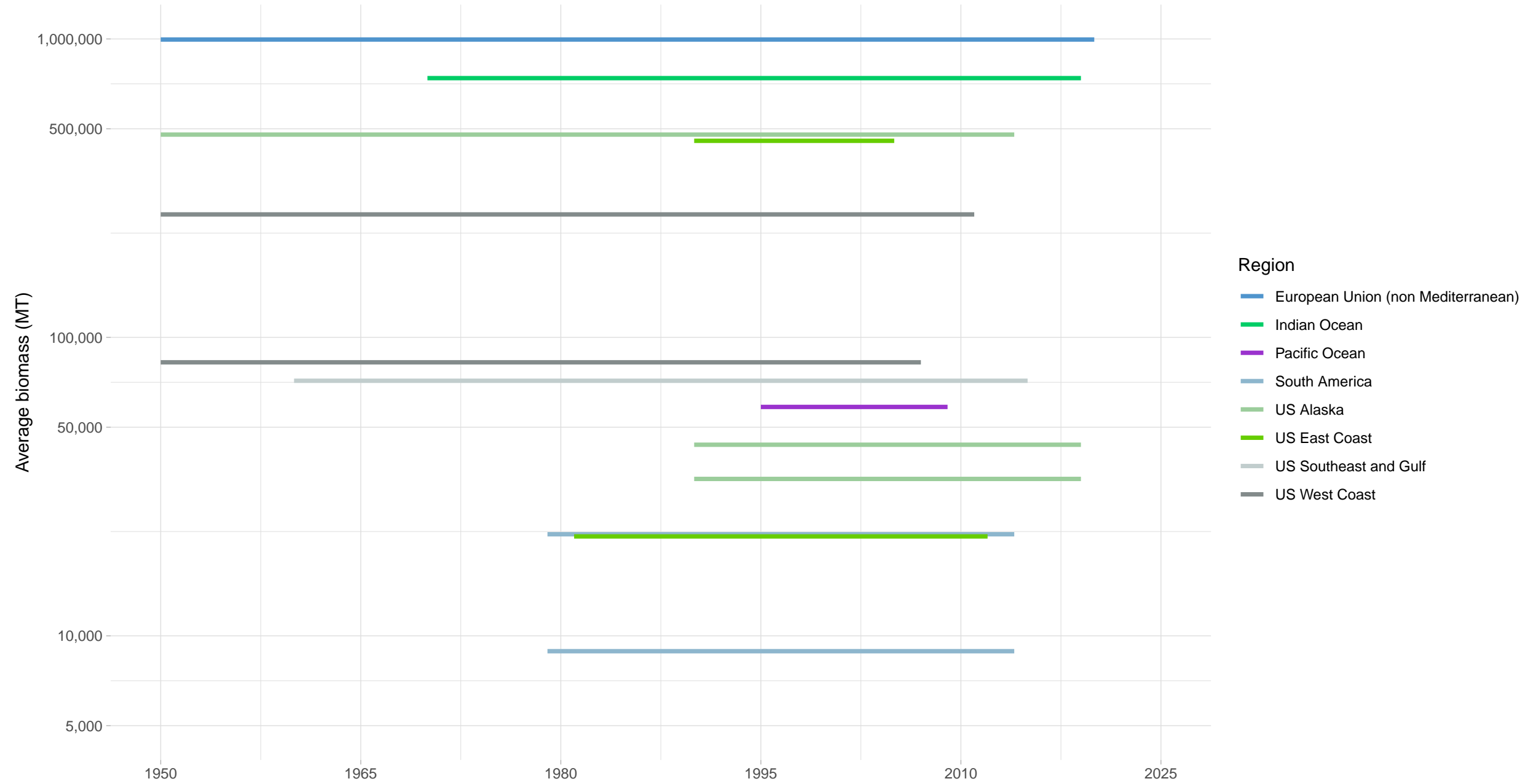
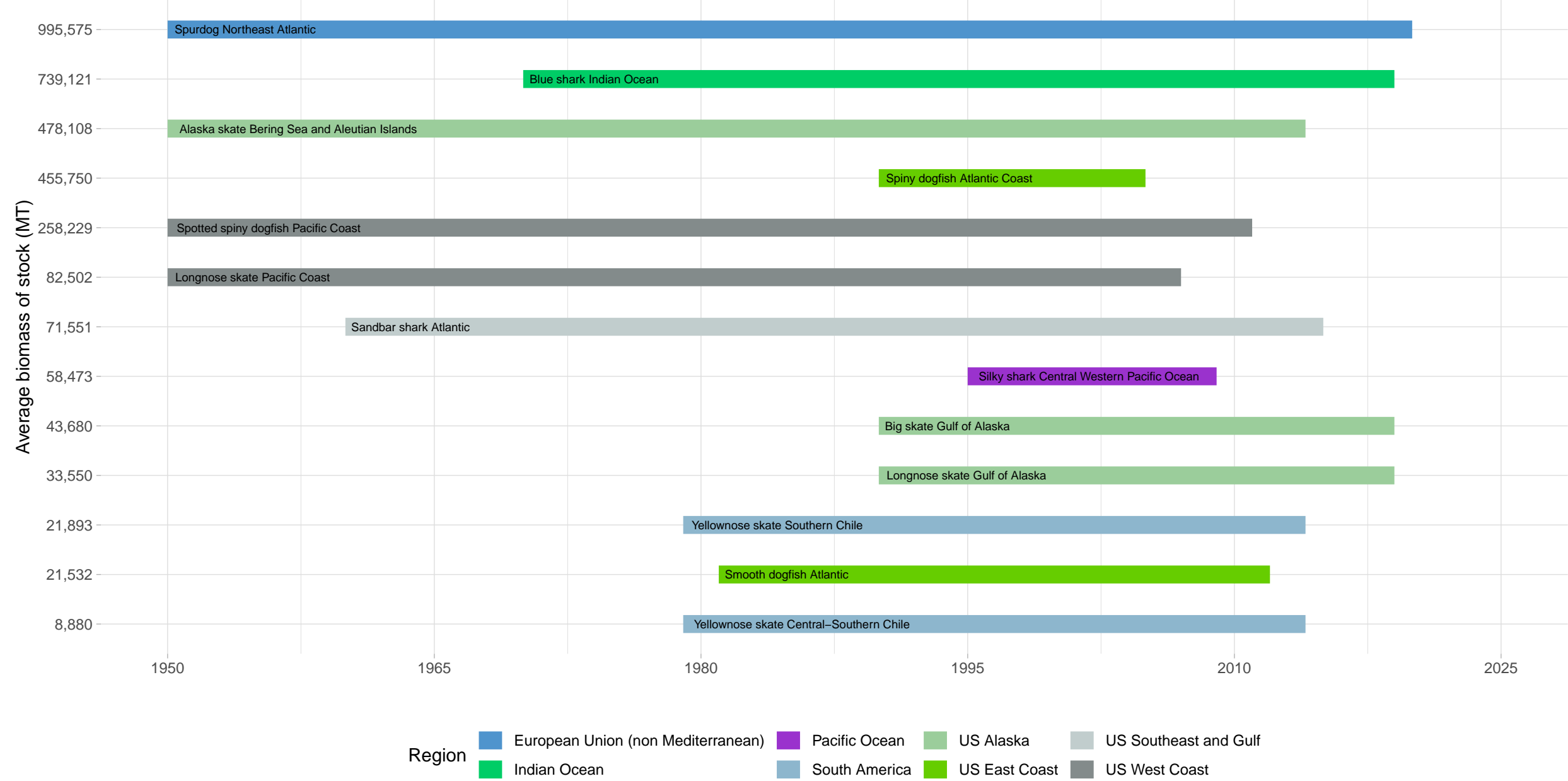


Biomass Coverage in Elasmobranchs Taxonomy Group



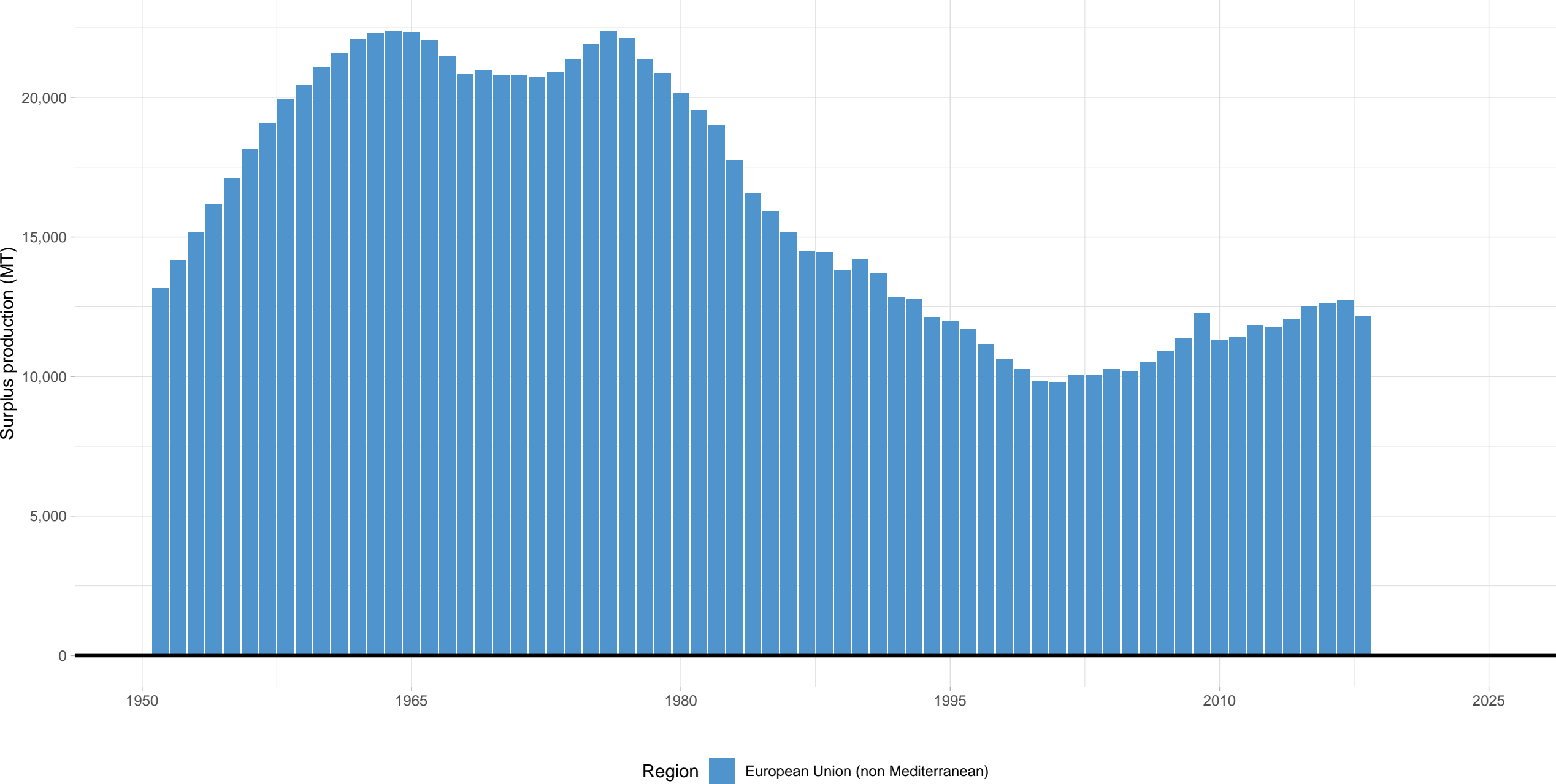
Biomass Coverage Over Time in Elasmobranchs Taxonomy Group

Stocks ordered from lowest to highest average biomass



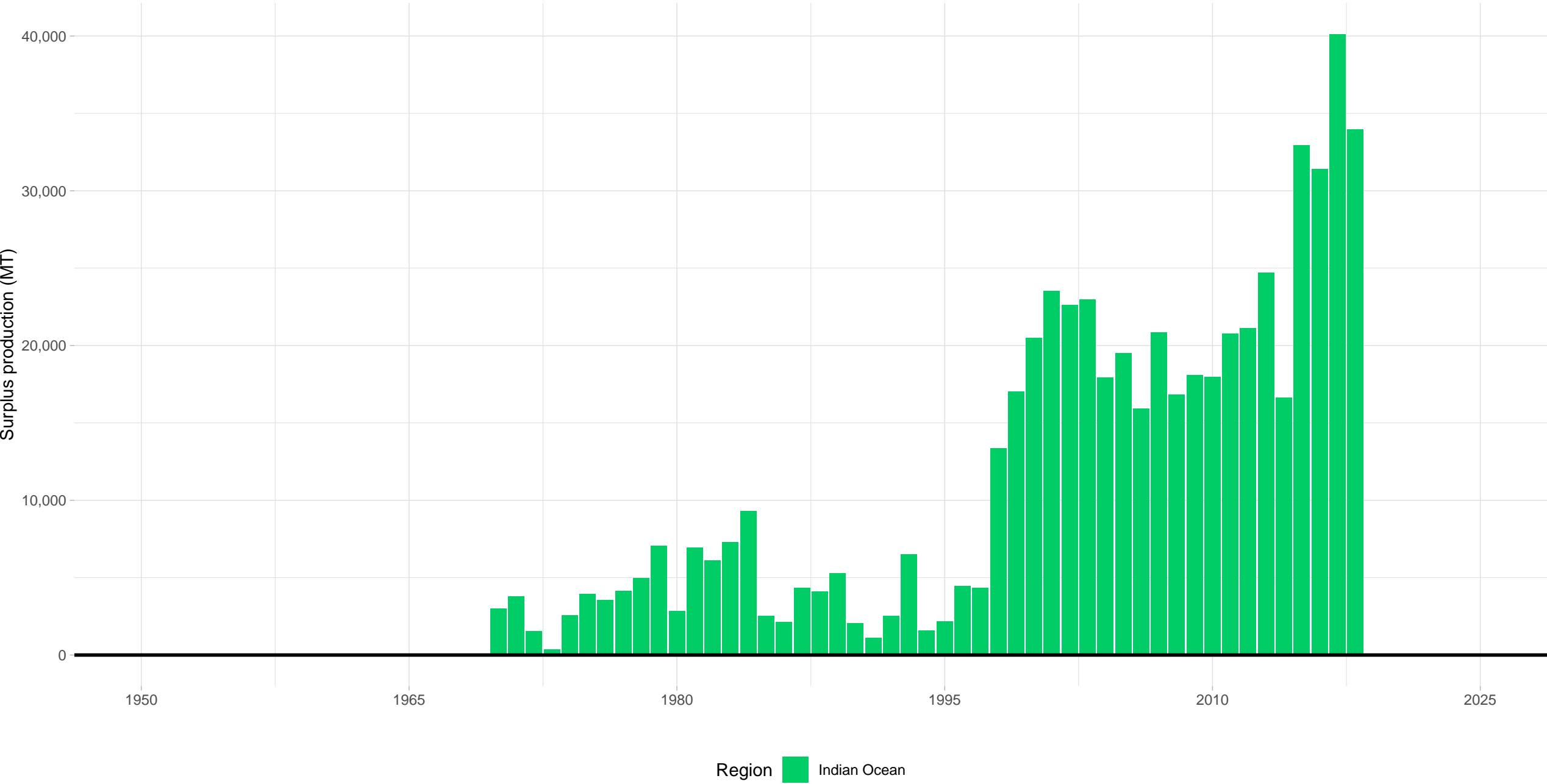
Spurdog Northeast Atlantic – Elasmobranchs Taxonomy Group

Stock represents 13% of average absolute surplus production



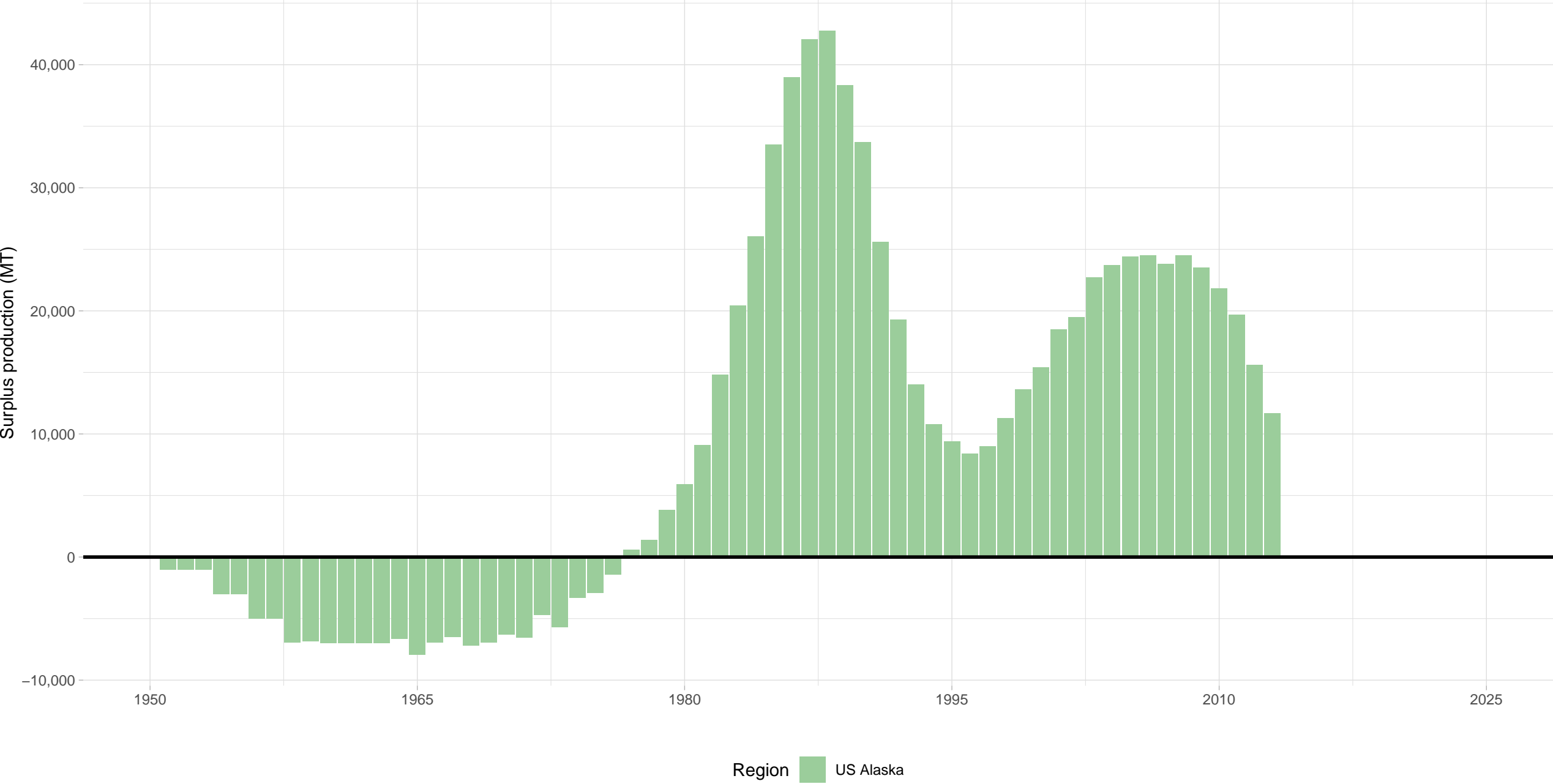
Blue shark Indian Ocean – Elasmobranchs Taxonomy Group

Stock represents 13% of average absolute surplus production



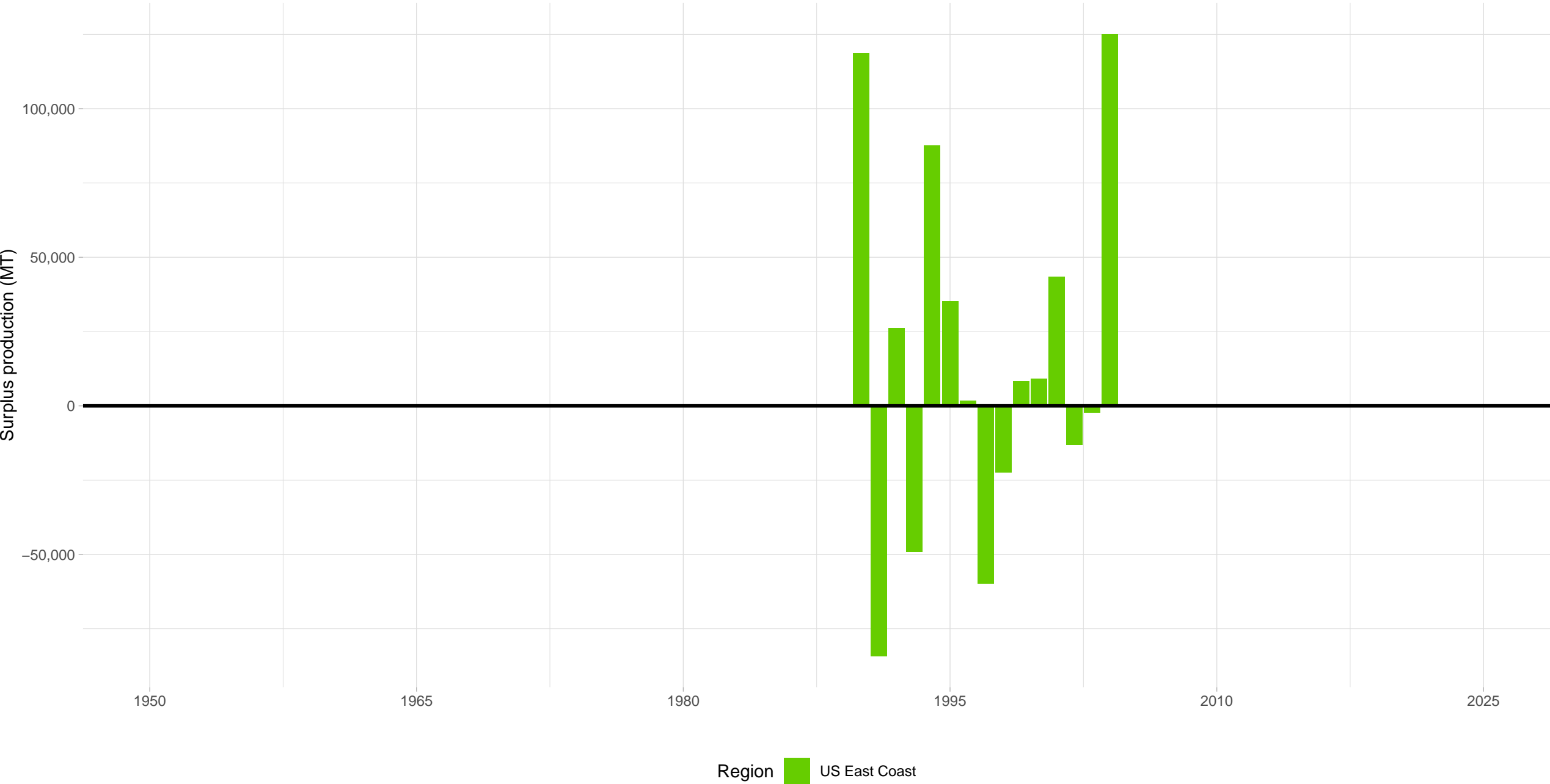
Alaska skate Bering Sea and Aleutian Islands – Elasmobranchs Taxonomy Group

Stock represents 15% of average absolute surplus production

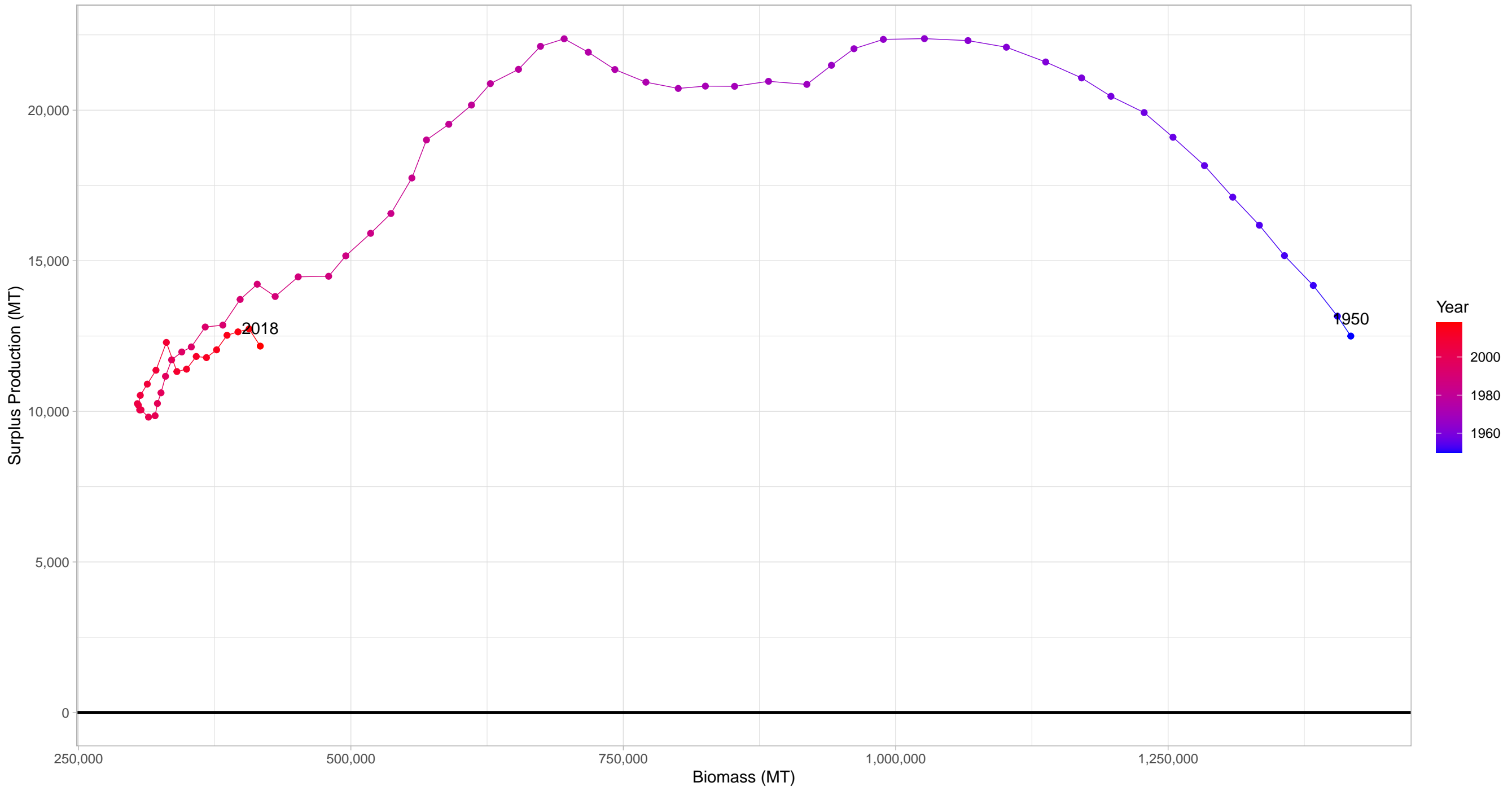


Spiny dogfish Atlantic Coast – Elasmobranchs Taxonomy Group

Stock represents 51% of average absolute surplus production

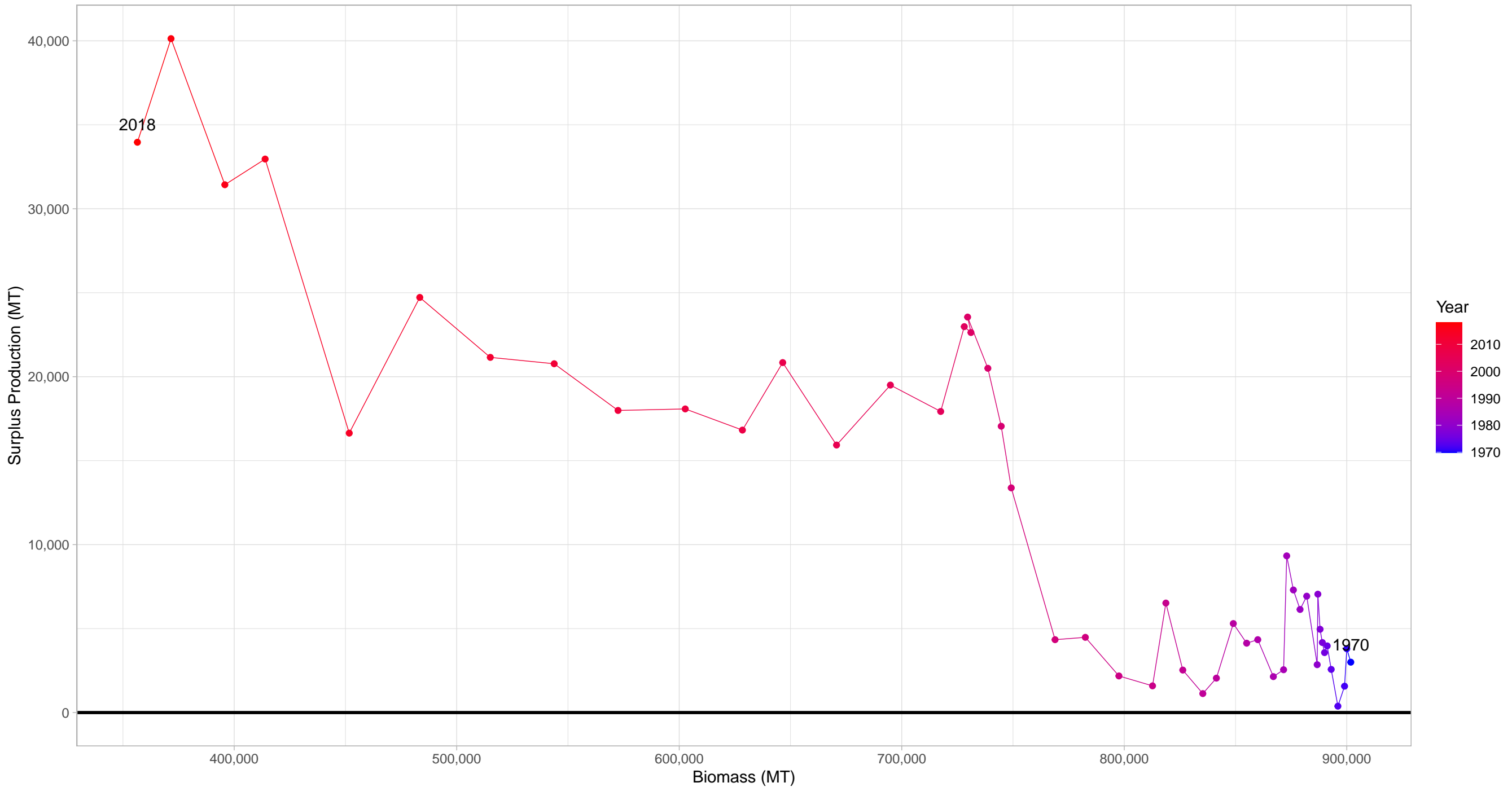


# Spurdog Northeast Atlantic in Elasmobranchs Taxonomy Group



First and last years with recorded surplus production are labeled

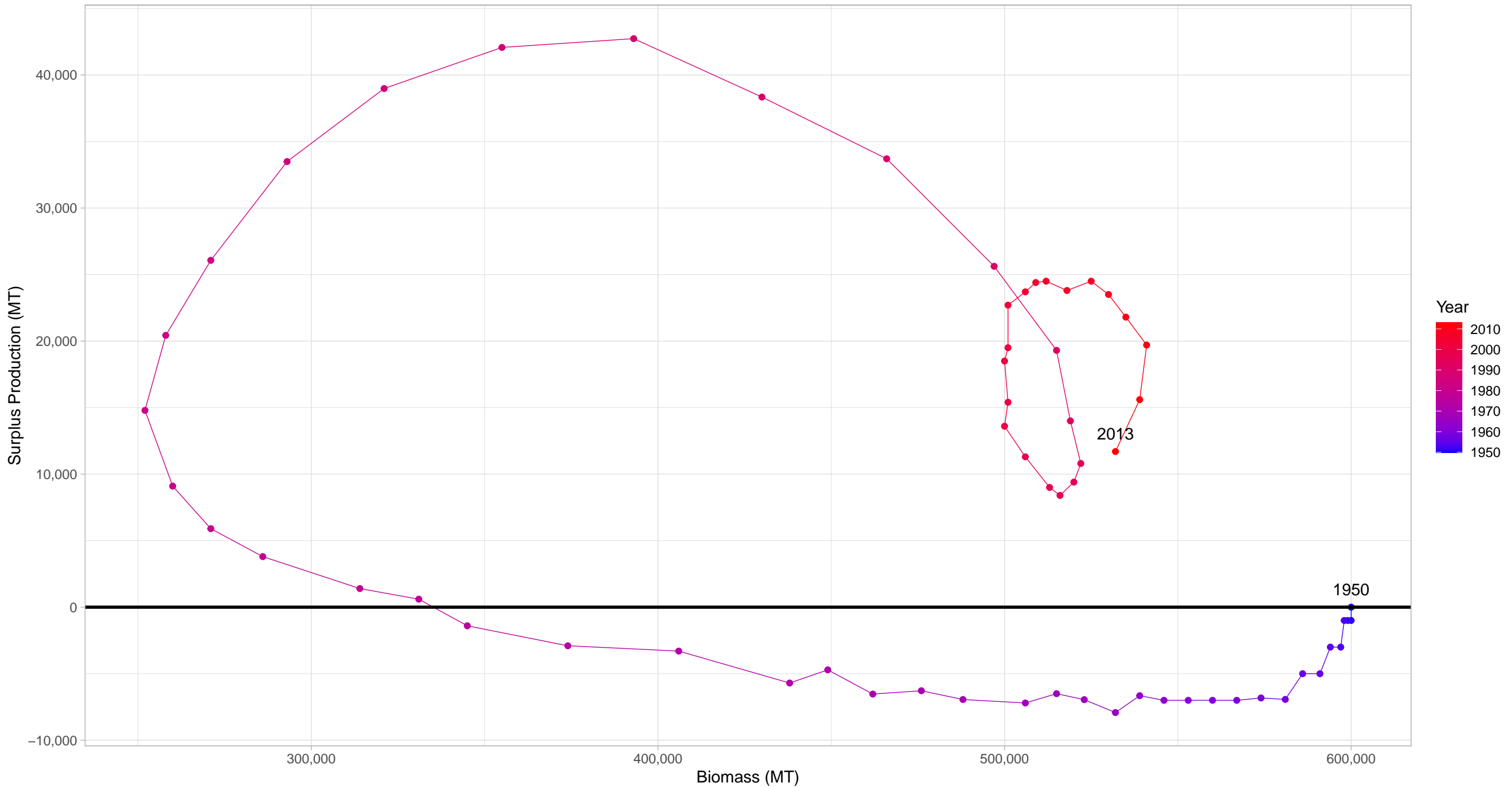
# Blue shark Indian Ocean in Elasmobranchs Taxonomy Group



First and last years with recorded surplus production are labeled

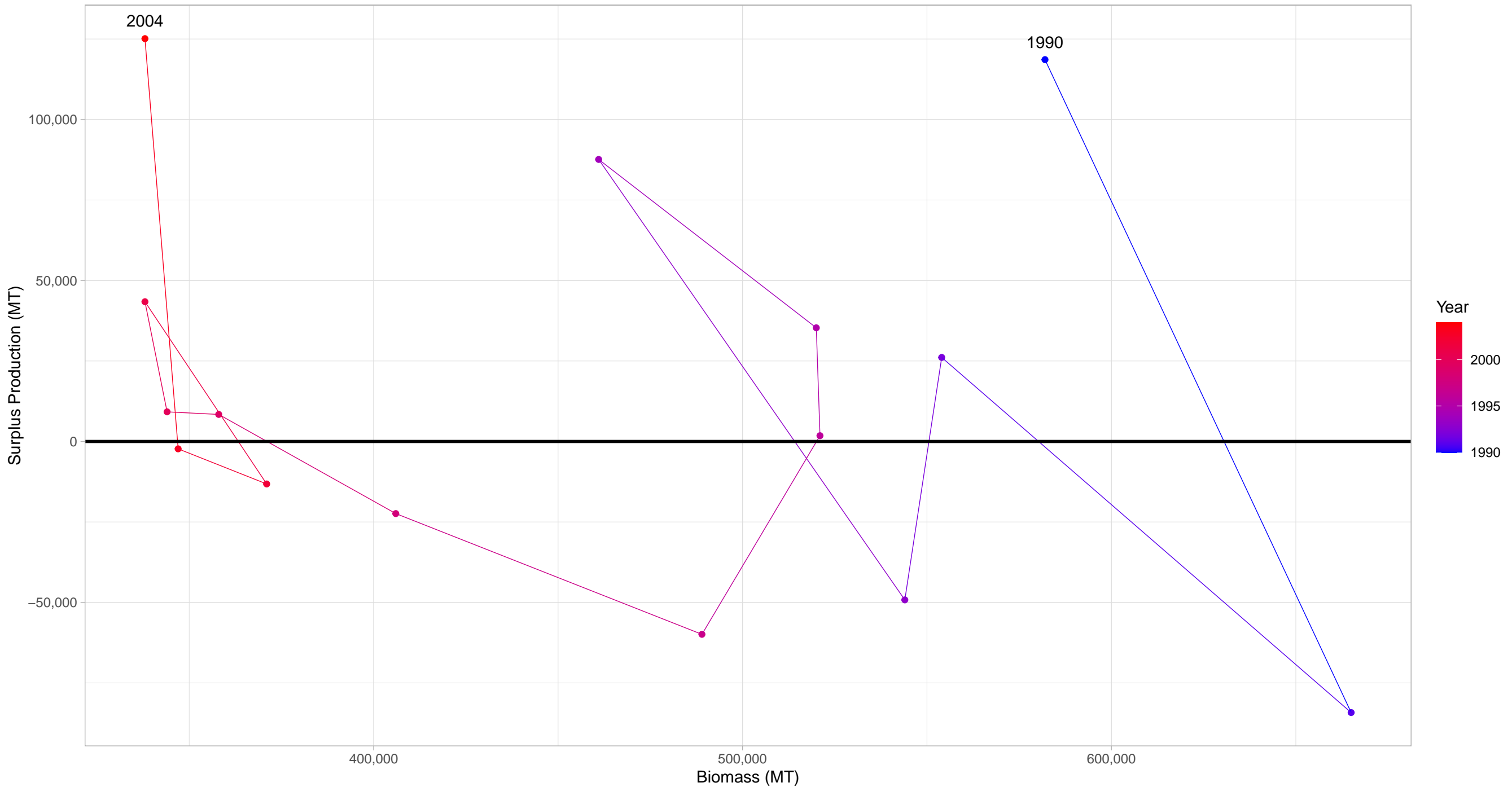


# Alaska skate Bering Sea and Aleutian Islands in Elasmobranchs Taxonomy Group



First and last years with recorded surplus production are labeled

# Spiny dogfish Atlantic Coast in Elasmobranchs Taxonomy Group



First and last years with recorded surplus production are labeled