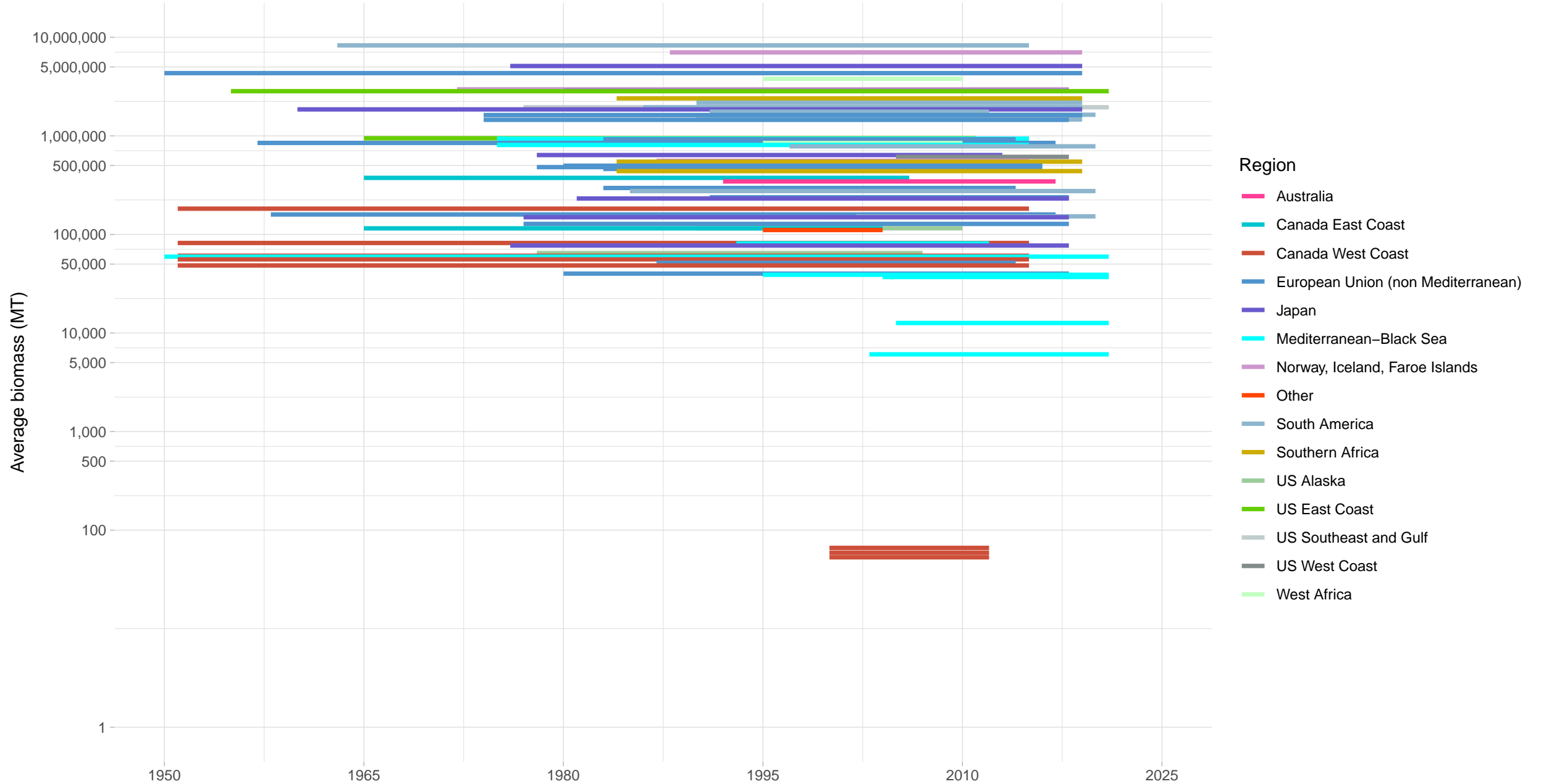
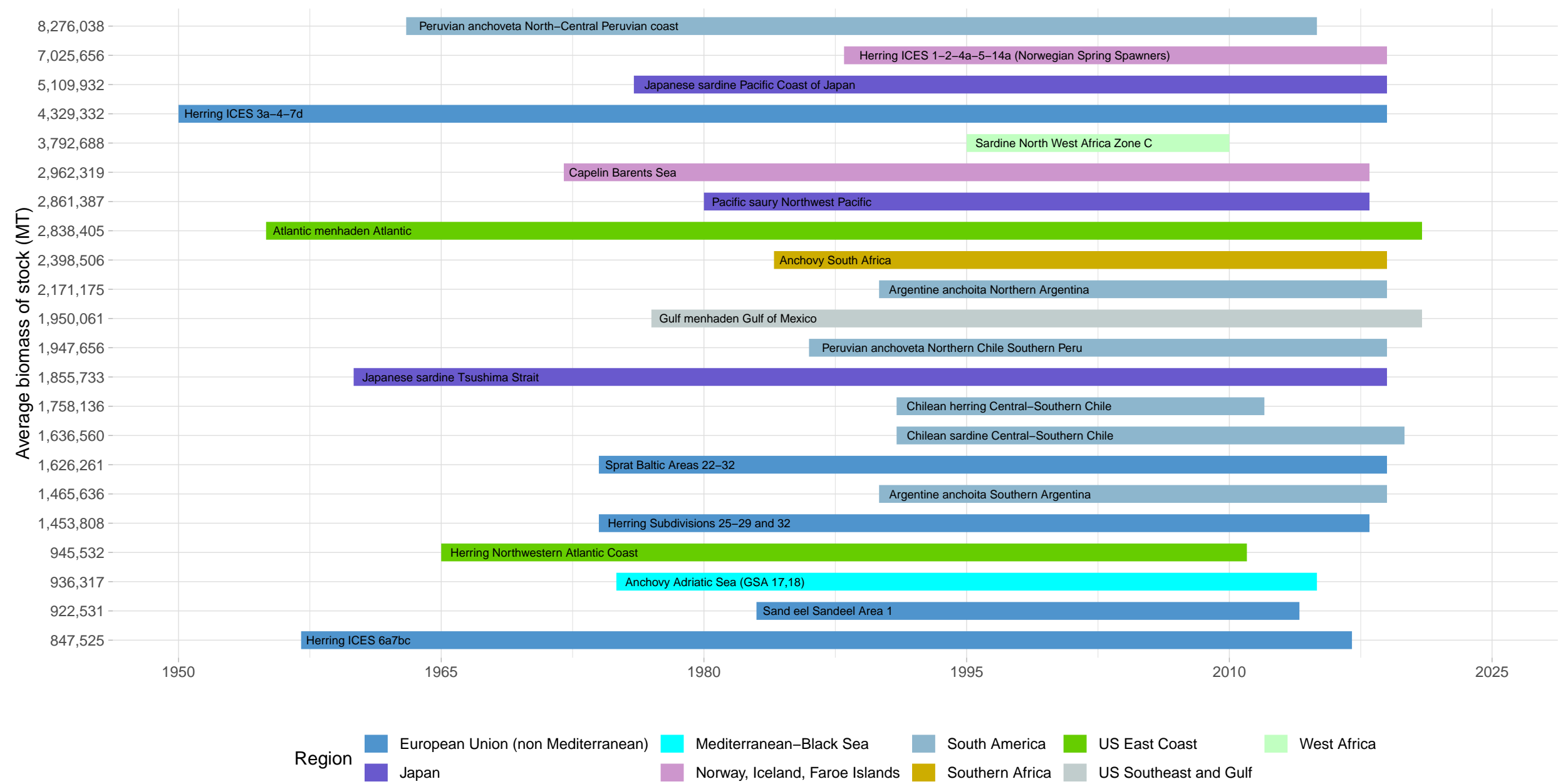


Biomass Coverage in Forage Fish Taxonomy Group

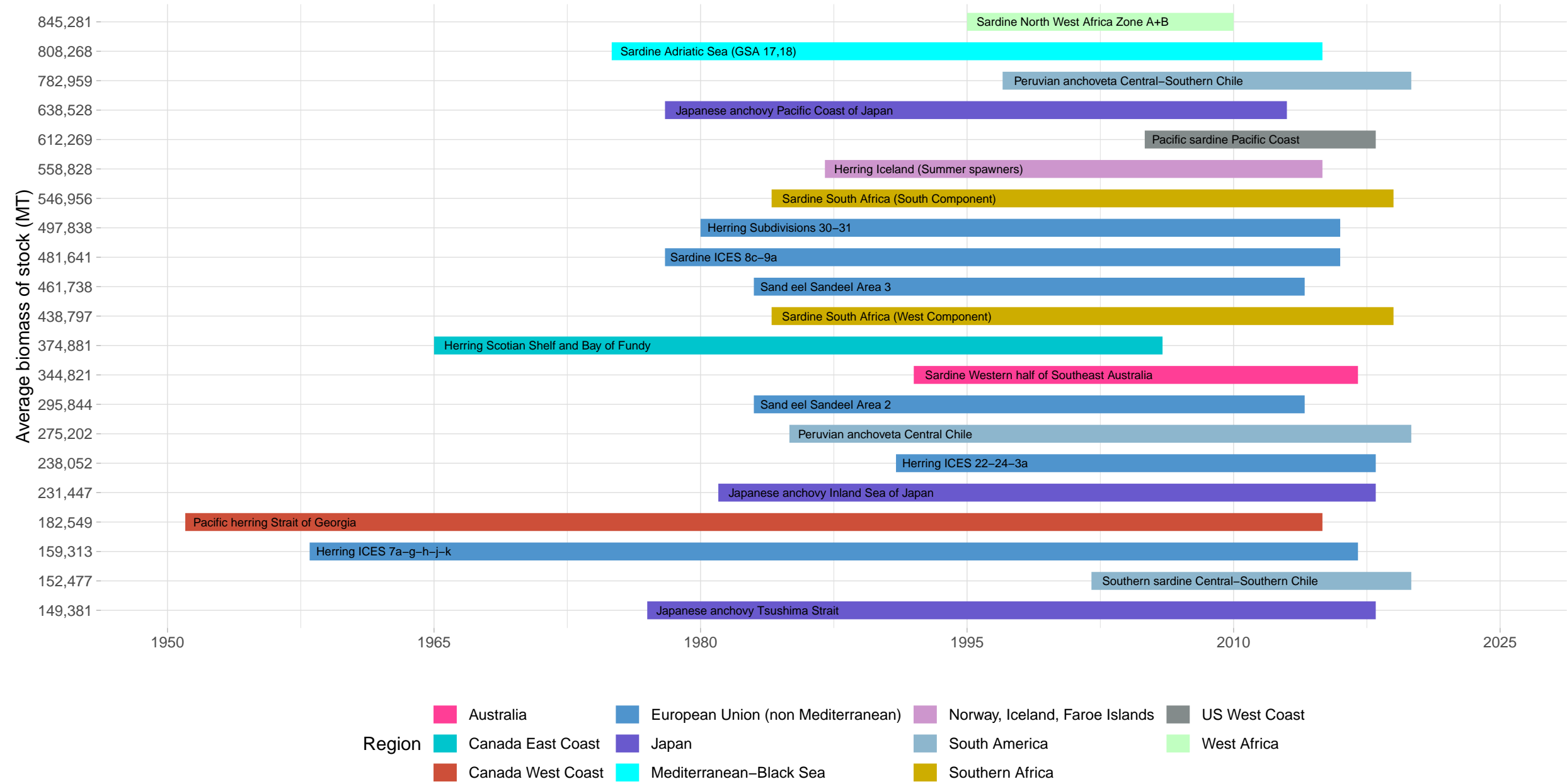


Biomass Coverage Over Time in Forage Fish Taxonomy Group
1/3 of Stocks with highest average biomass

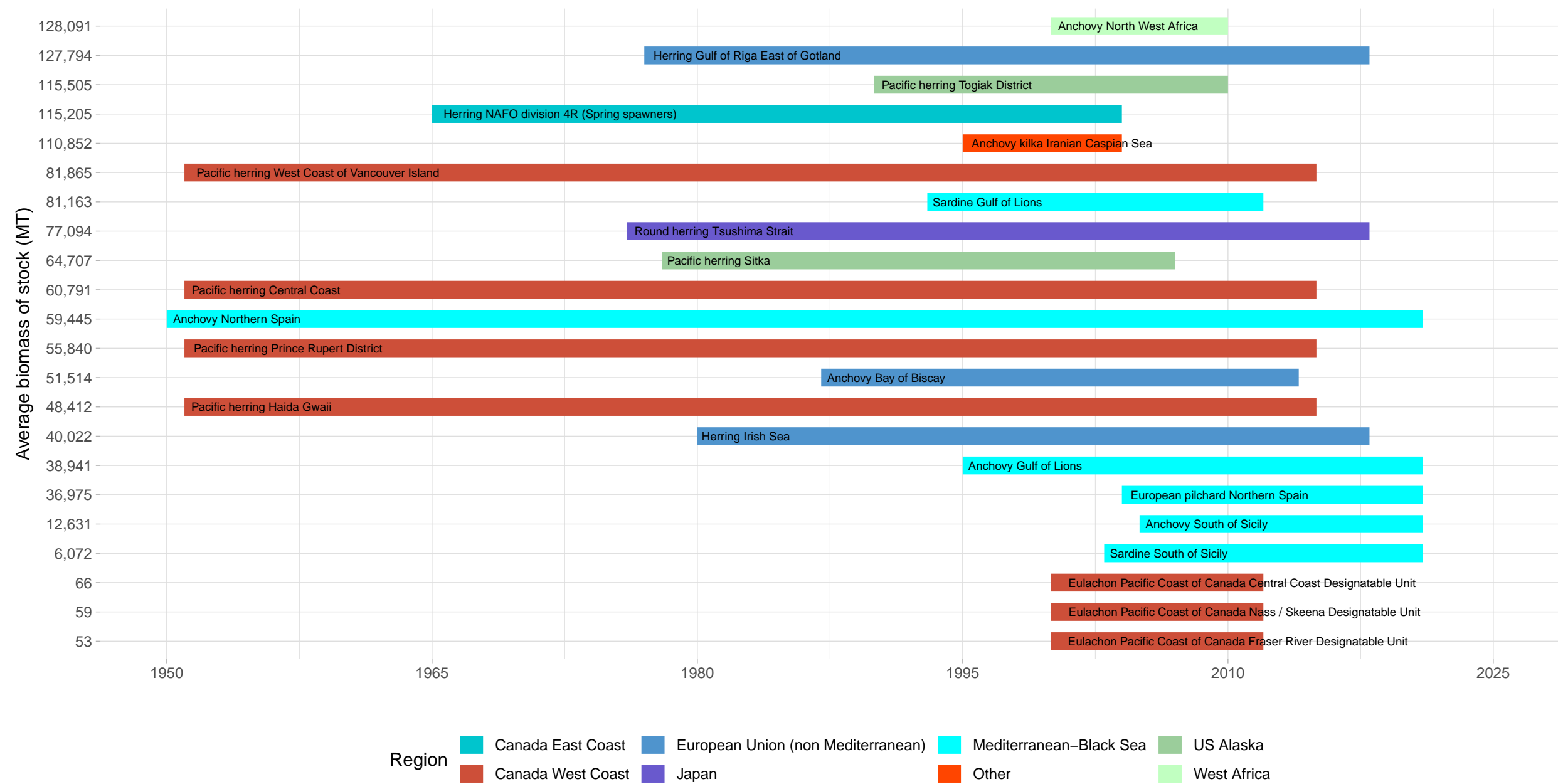


Biomass Coverage Over Time in Forage Fish Taxonomy Group

1/3 of Stocks with medium average biomass

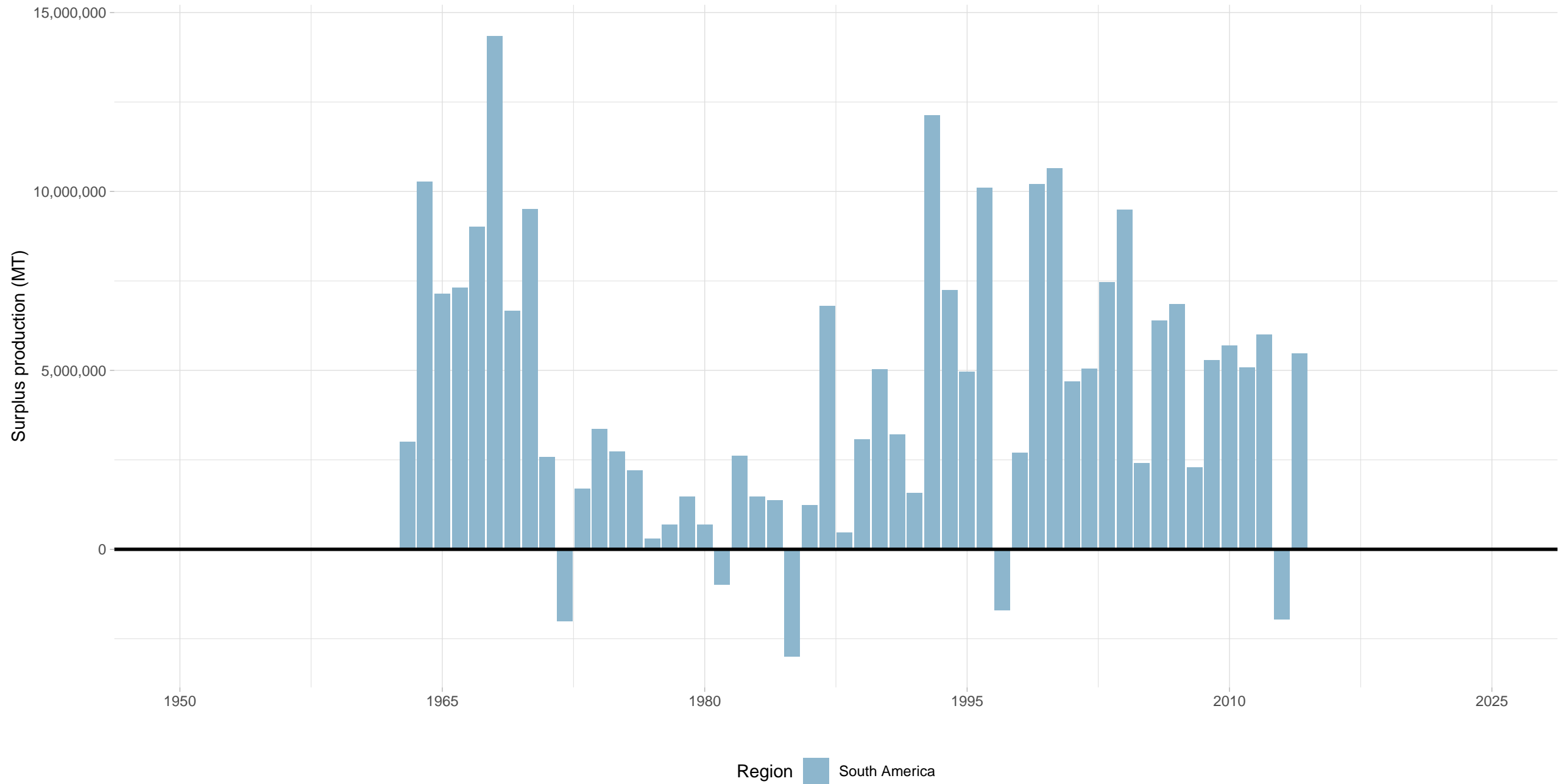


Biomass Coverage Over Time in Forage Fish Taxonomy Group
1/3 of Stocks with lowest average biomass



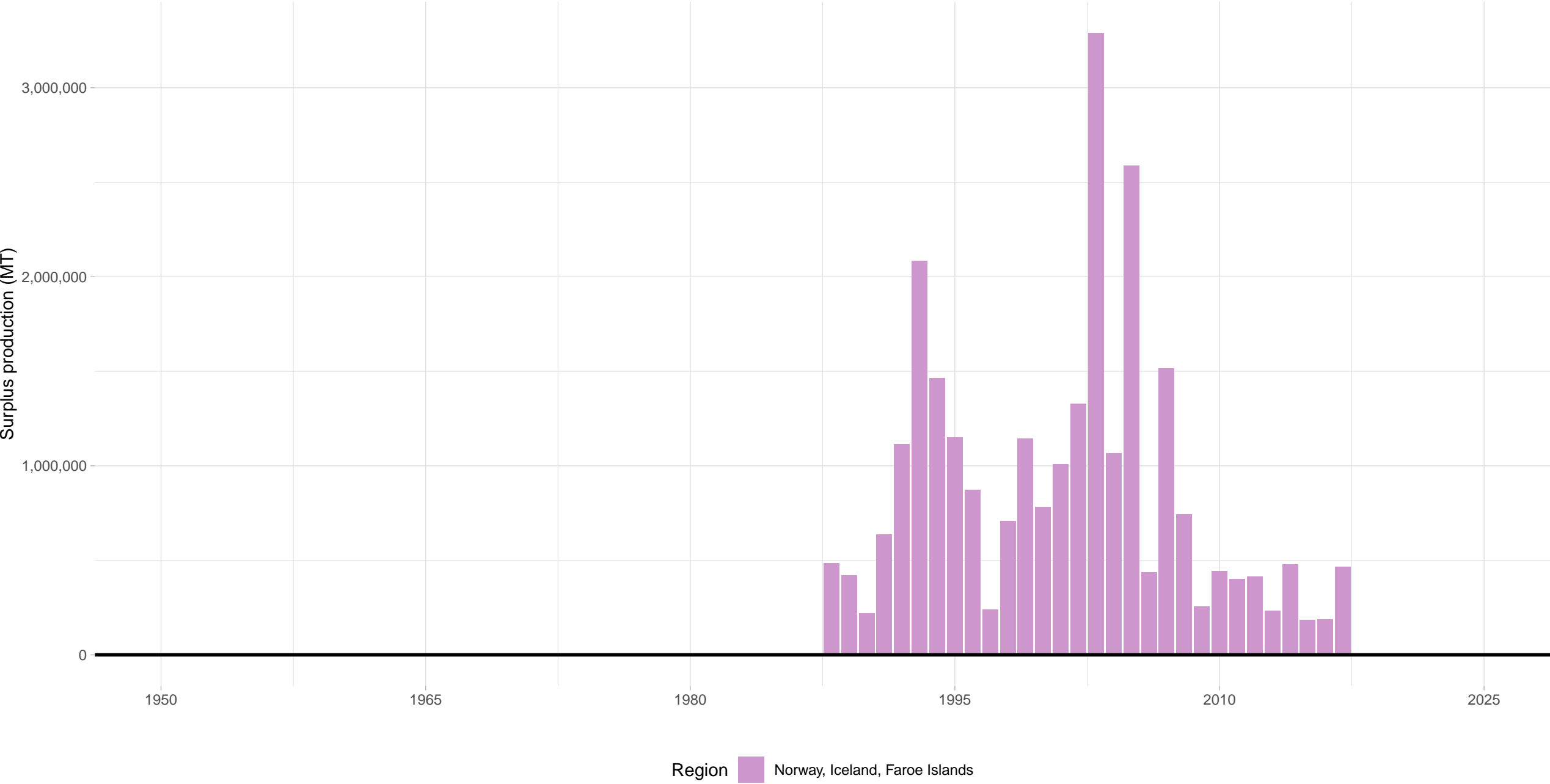
Peruvian anchoveta North-Central Peruvian coast – Forage Fish Taxonomy Group

Stock represents 24% of average absolute surplus production



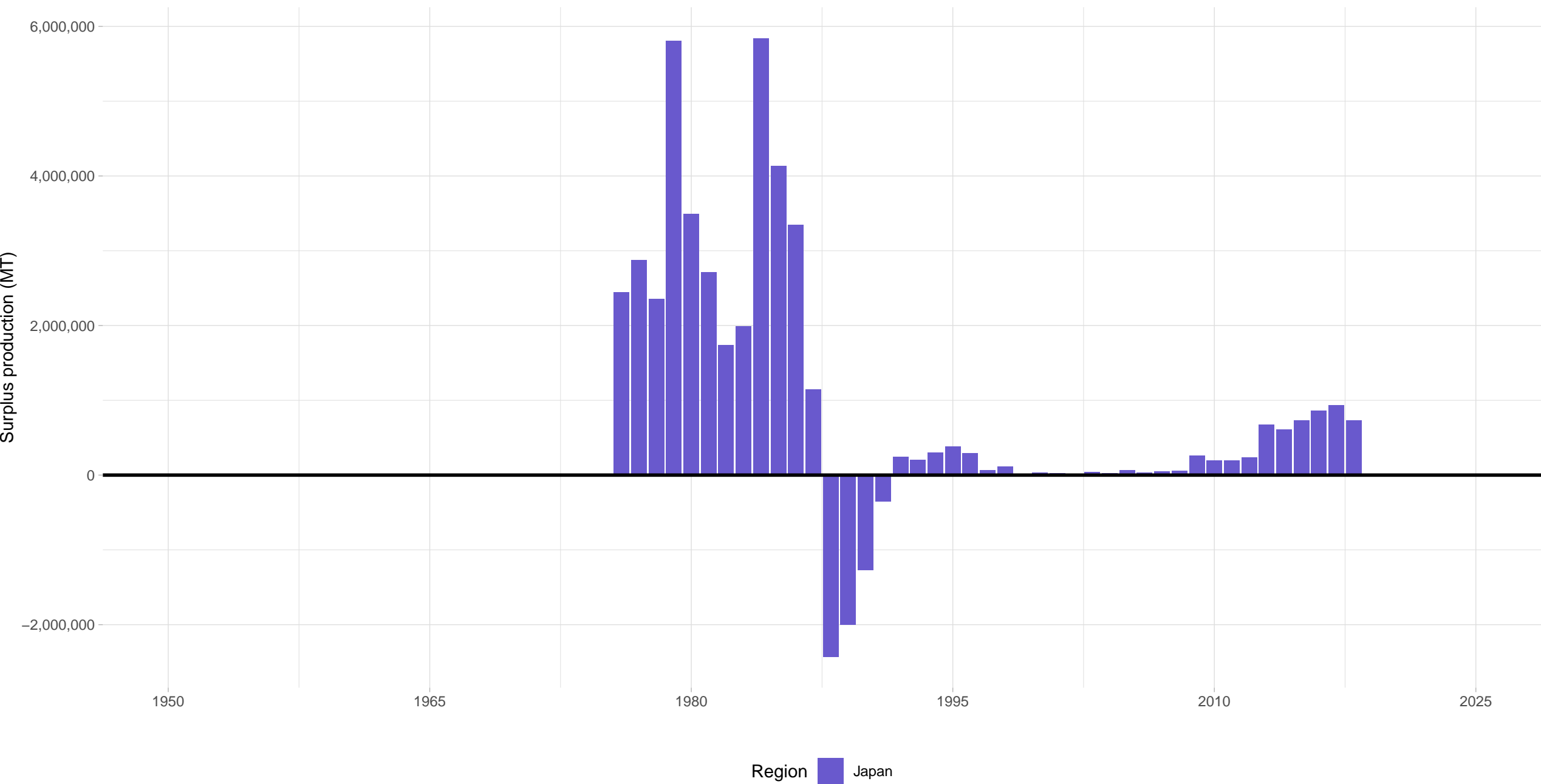
Herring ICES 1–2–4a–5–14a (Norwegian Spring Spawners) – Forage Fish Taxonomy Group

Stock represents 4% of average absolute surplus production



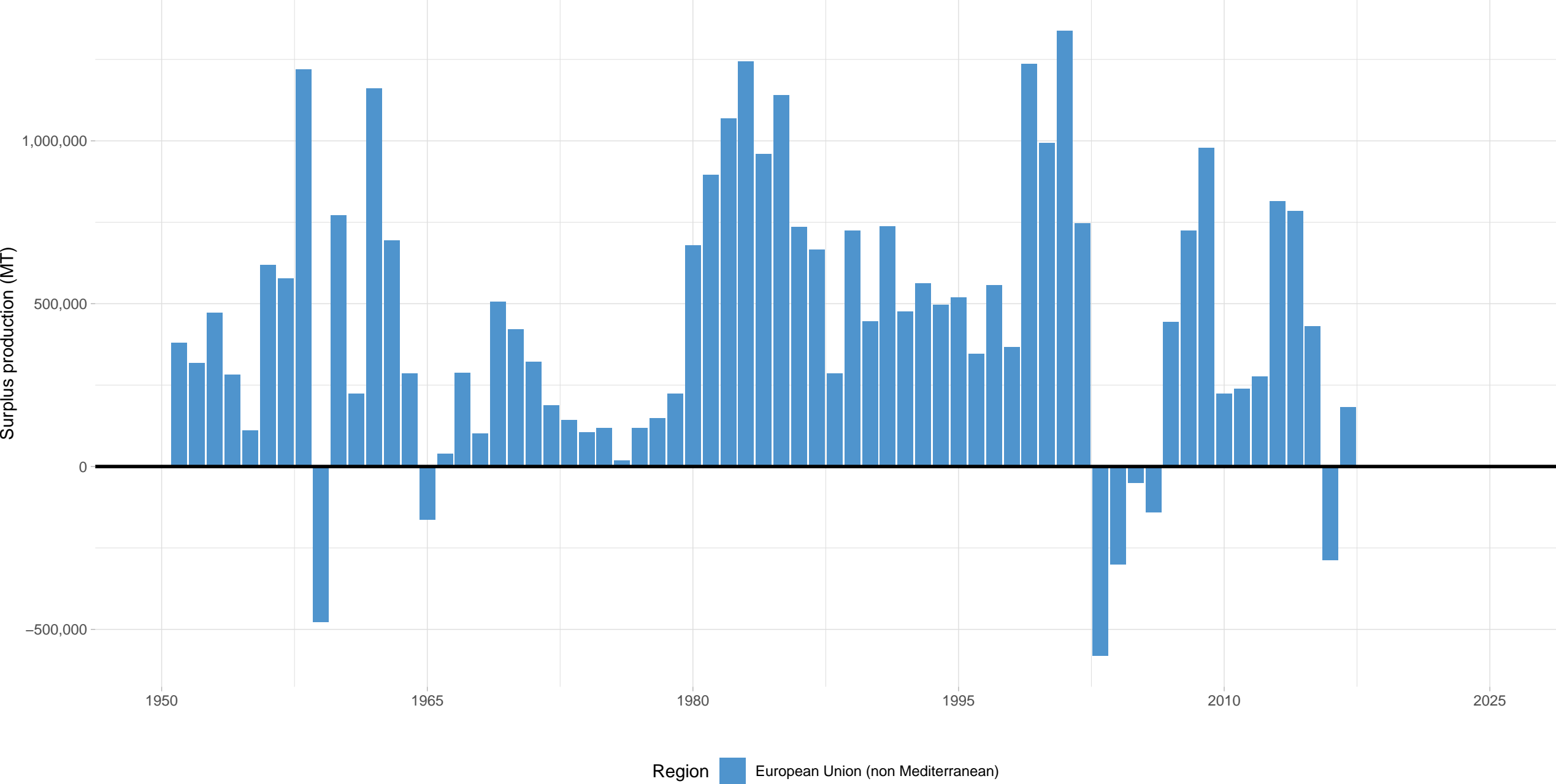
Japanese sardine Pacific Coast of Japan – Forage Fish Taxonomy Group

Stock represents 6% of average absolute surplus production

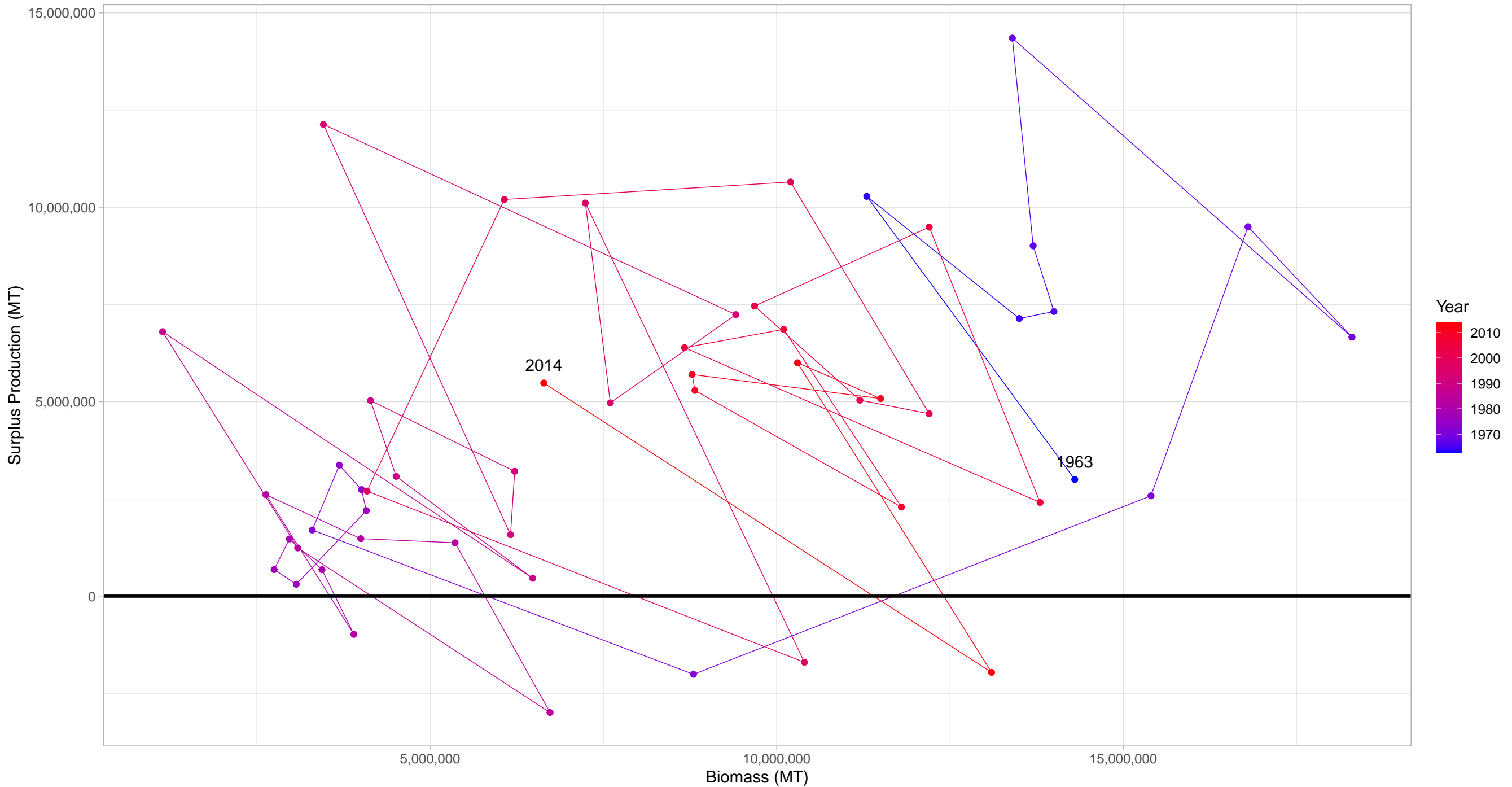


Herring ICES 3a–4–7d – Forage Fish Taxonomy Group

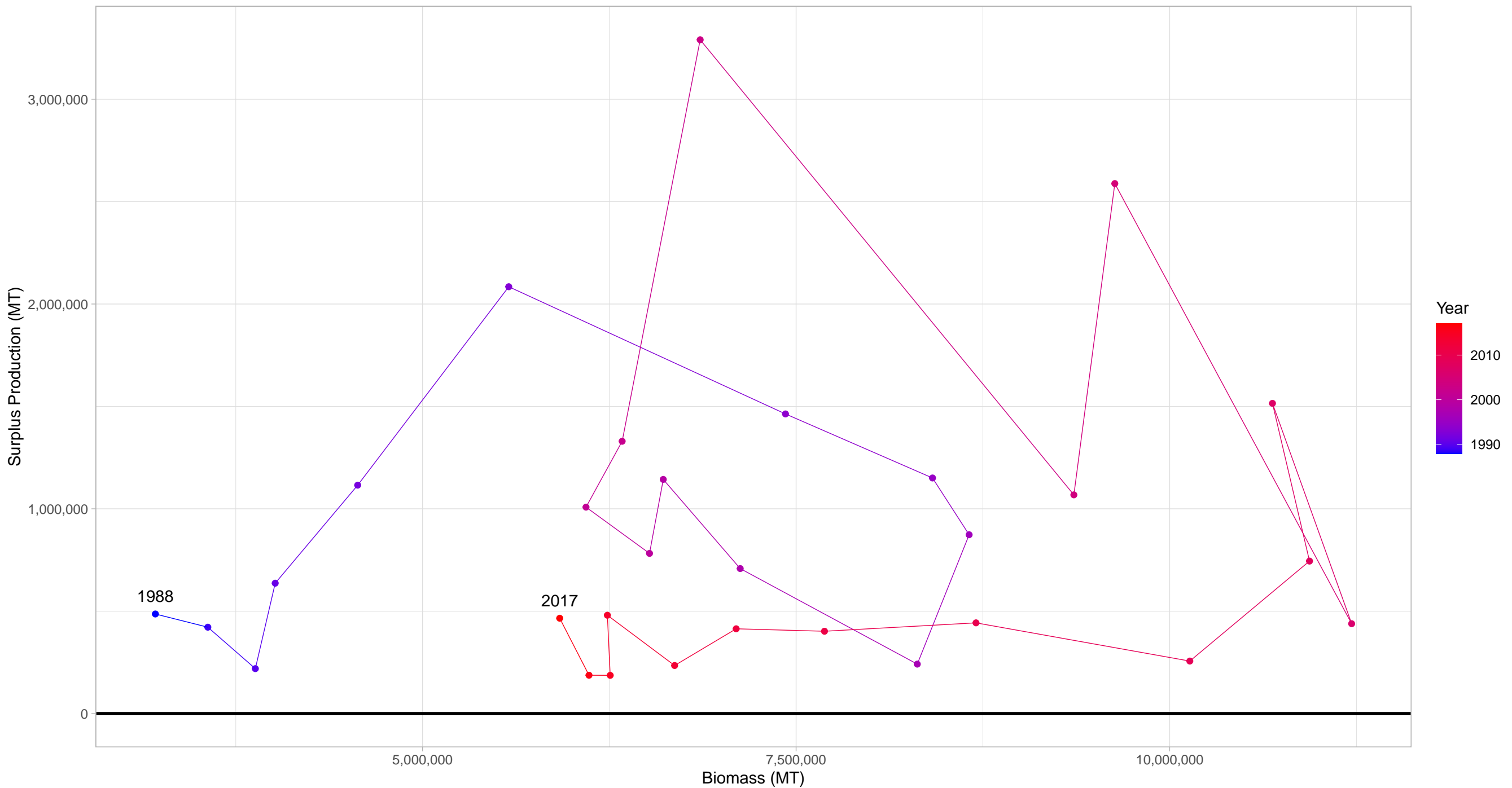
Stock represents 3% of average absolute surplus production



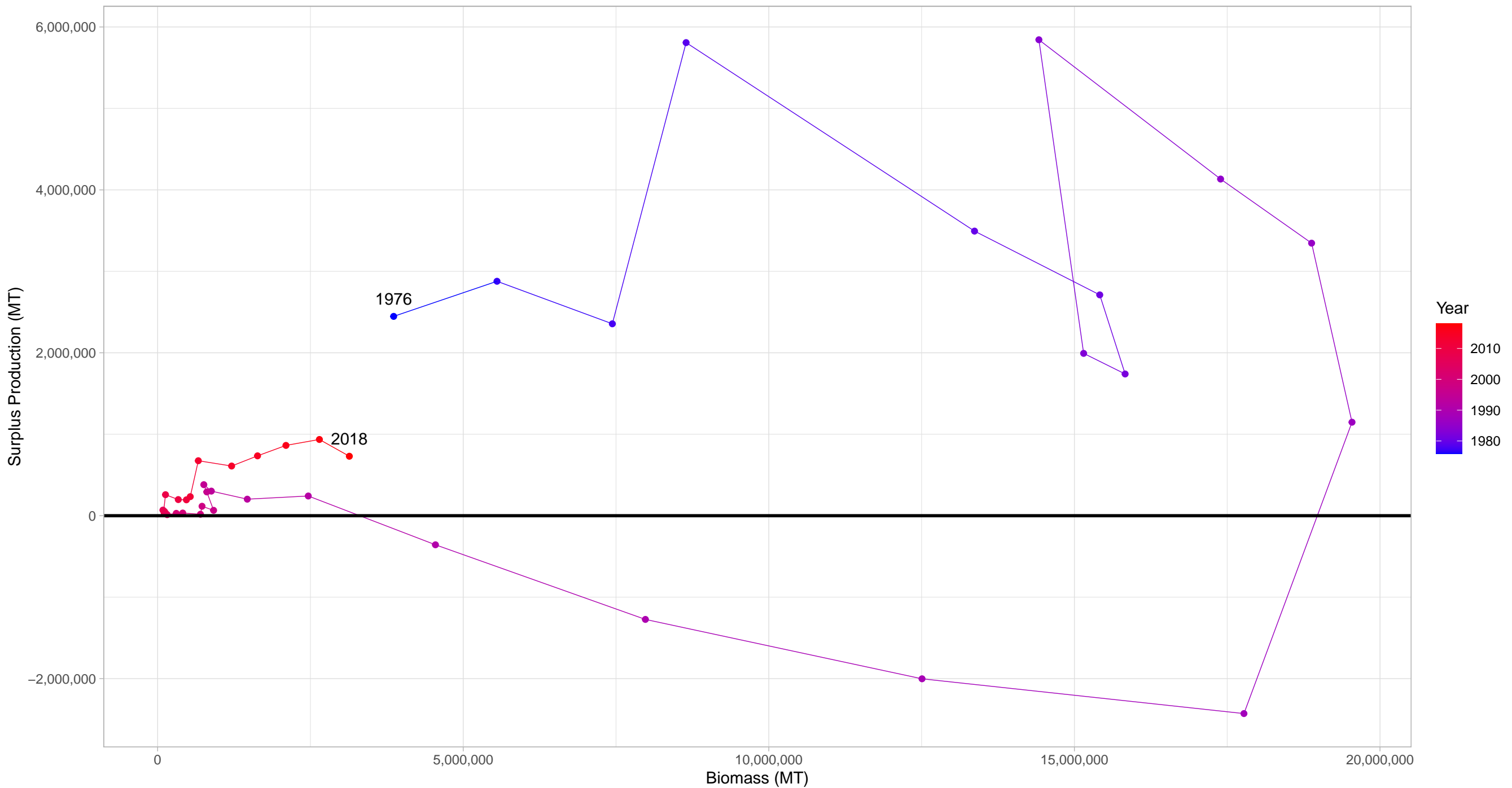
Peruvian anchoveta North–Central Peruvian coast
in Forage Fish Taxonomy Group



Herring ICES 1-2-4a-5-14a (Norwegian Spring Spawners) in Forage Fish Taxonomy Group



Japanese sardine Pacific Coast of Japan in Forage Fish Taxonomy Group



Herring ICES 3a-4-7d
in Forage Fish Taxonomy Group

